



BROWNING[®]

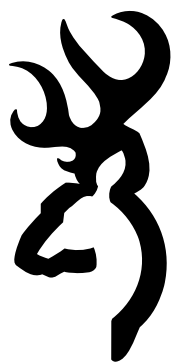
TRAIL CAMERAS

2026

BROWNINGTRAILCAMERAS.COM

PRODUCT CATALOG

WELCOME



BROWNING[®]

TRAIL CAMERAS

ALL HD ALL THE TIME

ALL IMAGES TRANSMITTED IN FULL HD



USA BASED
TECH
SUPPORT



NEW!
APP
SUPPORT



NEW!
MAPPING
FEATURES

At Browning Trail Cameras, we are hunters, outdoor enthusiasts, and innovators at heart. Every year, we challenge ourselves to push the boundaries of trail camera technology, and 2026 is no exception. With a commitment to quality, performance, and dependability, our mission remains simple: to deliver cameras that help you capture the moments that matter most.

This year, we're proud to introduce several key advancements that elevate the way you scout and monitor the outdoors. Our latest cellular models now feature direct video transmission, allowing you to receive full video clips immediately after capture. There's no more waiting for manual video requests or relying on low-resolution previews. You get the footage you need, right when it happens.

All of our 2026 cellular trail cameras are now equipped with built-in color viewing screens, making it easier than ever to review photos and videos directly in the field. This vivid, on-camera display brings a new level of convenience and control to your scouting experience.

Keeping your camera powered has also become more efficient than ever. With our solar-powered battery packs and lithium-ion options, your trail camera can now operate continuously without the need for battery changes. That means more time capturing and less time maintaining.

Whether you're interested in our cellular cameras running on nationwide 4G LTE networks, our advanced Radiant Night Illumination Technology, our dual lens systems, or our crisp Full HD and 4K Video capabilities, Browning Trail Cameras has the technology to meet your needs in 2026.

Every camera and accessory is built with quality craftsmanship and durable materials. Each one is backed by a one-year manufacturer's warranty for added peace of mind.

Thank you for choosing Browning Trail Cameras. We're proud to support your time in the field and remain committed to earning your trust with every image and video you capture. Browning Trail Cameras truly are The Best There Is.

888.618.4496
www.browningtrailcameras.com
info@browningtrailcams.com

STRIKE FORCE WIRELESS APP + MAPS PRO ADD-ON



NEW IN 2026!

- ✓ New Cell Cams
- ✓ New App
- ✓ New Unlimited Plans
- ✓ World Class Service



The most complete experience in cell camera technology now offers users the ability to integrate maps and view weather remotely with the **Maps Pro** add-on feature. Get started now and you'll never look back!

MAPS PRO FEATURES

- REAL TIME WEATHER
- CREATE CUSTOM WAYPOINTS
- PROPERTY BOUNDARIES
- LAND OWNER INFO
- TOPO GRADIENT LAYER
- SEE RADAR PRECIPITATION AND CLOUD COVER
- MEASURE AREA AND ACREAGE



FREE TRIAL PLAN



SHARE WITH FRIENDS



PHOTOS & VIDEOS





NEW!
INSTANT VIDEO
VIEWING



**HIGH
GAIN
ANTENNA**



**ALL HD
IMAGES
VIDEOS**



**VIEW
PHOTOS
ON PHONE**



**REAL TIME
RADAR &
WEATHER**



**NEW!
CUSTOM
MAPS**



**GPS
TAGGED
IMAGES**
CAMERAS



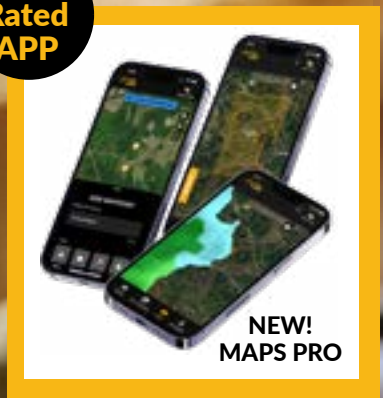
OPERATES ON THE
AT&T Wireless
4G LTE NETWORK

connected by
verizon

CELLULAR TRAIL CAM

THE FASTEST TRANSMISSION SPEEDS!

**#1
Rated
APP**



**NEW!
MAPS PRO**



NEW! DEFENDER PRO SCOUT MAX HD DV

Model# BTC-PSMHD-DV

The 2026 Defender Pro Scout Max HD DV camera introduces direct video transmission, allowing users to receive full video files immediately after capture, eliminating the delays associated with preview images and manual video requests. A newly designed folding antenna improves durability and transportability, keeping the antenna protected and secure when not in use. The addition of a color view screen enhances ease of setup in the field, providing clear on-site feedback during installation. The camera also offers ALL HD ALL THE TIME image uploads, 100 ft. Invisible Night IR Illumination, 46MP image capability, 1080p Full HD videos, and ON DEMAND photo and video requests. Combined with ultra-fast upload speeds and reliable cellular performance, the Pro Scout Max HD DV sets a new standard for scouting technology.

Camera Features

- 46 MP
- Transmits Video Straight to Smartphone
- ALL HD ALL THE TIME Images
- Invisible IR Night Illumination
- On Demand Pictures and Videos
- Foldable Ultra Long Range High Gain Cellular Antenna
- Auto Detect Cell Carrier with Best Signal
- External Port to Connect to Long Range Booster Antenna
- 100 ft. Invisible Infrared Illumination at Night
- Adjustable IR Flash (Power Save, Fast Motion, Long Range)
- Invisible IR Night Illumination
- 0.25 Second Trigger Speed
- GPS Tagged Images
- Full HD 1080p Videos with Sound (5 sec.- 2 min. length)
- 100 Ft. Image Detection Range
- 0.35 Second Recovery Time Between Images
- Illuma-Smart Technology Automatically adjusts IR Flash for Perfect Night Photos
- SD Card Management Options
- Smart IR Video
- Up to 1 Year Battery Life from 8 AA batteries (not included)
- Up to 8 Multi Shot Images
- Up to 8 Rapid Fire Images
- Programmable Picture Delay (1 sec. - 60 min.)
- Picture info bar displays: Time, Date, Temperature, Barometric Pressure Moon Phase, Camera ID
- 12 volt External Power Jack
- Supports up to 512GB SDXC Memory Card (not included)
- ¼" -20 Tripod Socket
- 1.5" Color Viewscreen



ALL HD ALL THE TIME

ALL IMAGES TRANSMITTED IN FULL HD

CELLULAR FUNCTIONS:

- Operates on a Nationwide 4G LTE Network
- All Images Uploaded in HD
- Uploads Videos
- Create Folders Online to Organize Images
- Month-to-Month Data plans
- No Contracts
- Activate Cameras Only when You Need Them
- Easy to Use Mobile App for Smart Phones
- Scheduled or Immediate Image uploads

**LIVE
STREAM**

**CELLULAR
TRAIL CAM**

**GPS
THEFT PROTECT**



GPS
THEFT
PROTECTION



NEW!
CUSTOM
MAPS



REAL TIME
RADAR &
WEATHER



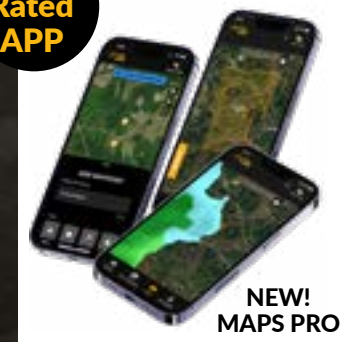
FULL
HD
ALL HD
IMAGES
VIDEOS



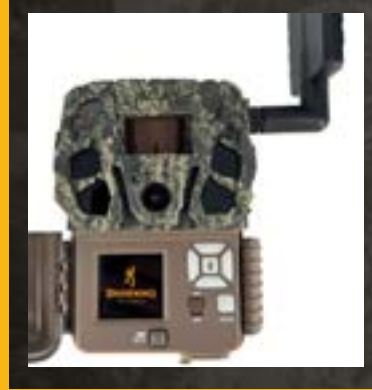
HIGH
GAIN
ANTENNA



**#1
Rated
APP**



NEW!
MAPS
PRO



NEW! DEFENDER VISION PRO LSF

The all-new Defender Vision Pro LSF camera delivers real-time livestreaming of images and video directly to your Strike Force Wireless app, giving you instant visibility from the field when motion is detected. This model makes advanced livestream technology more accessible while maintaining high-end performance. Users can select between a longer-range Low Glow infrared flash or Invisible IR flash, tailoring performance to their specific location and game activity. The camera also includes a 1.5 inch color viewing screen for easy setup and on-site image review. With Full HD image delivery, 1080p video with sound, 110 ft. Night IR Illumination, GPS Theft Protection, a high gain antenna, and nationwide 4G LTE connectivity, the Defender Vision Pro LSF is a versatile and reliable solution for year-round field monitoring.



Model# BTC-VPHD-LSF



Camera Features

- 46 MP
- Realtime Livestream
- ALL HD ALL THE TIME Images
- Selectable Low Glow or Invisible Infrared Night Illumination
- On Demand Pictures and Videos
- Ultra High Gain Cellular Antenna
- Instant photo or video upload capability
- 110 ft. Infrared Illumination at Night
- 0.135 - 0.7 Second Adjustable Trigger Speed
- GPS Theft Protect Security System
- External Port to connect a Booster Antenna
- 1920 x 1080 FHD Videos with Sound (5 sec.- 2 min. length)
- Adjustable Detection Range up to 80 ft.
- GPS Tagged Images
- 0.5 Second Recovery Time between Images
- Illuma-Smart Technology Automatically adjusts IR Flash for Perfect Night Photos
- Smart IR Video
- Long Battery Life from 8 AA batteries (not included)
- Battery Meter Functions with Alkaline and Lithium Batteries
- Up to 8 Multi Shot Images
- Up to 8 Rapid Fire Images
- Programmable Picture Delay (1 sec. - 60 min.)
- Picture info bar displays: Time, Date, Temperature, Moon Phase, Camera ID
- 12 volt External Power Jack
- ¼" -20 Tripod Socket
- Metal Tree Mount Bracket
- 2" Color Viewscreen

CELLULAR FUNCTIONS:

- Operates on a Nationwide 4G LTE Network
- All Images Uploaded in HD
- Uploads Videos
- GPS tagged images
- Mapping feature
- Create Folders to Manage Content
- Month-to-Month Data plans
- No Contracts
- Activate cameras only when you need them
- Easy to use mobile app
- Scheduled or immediate image uploads

 **GPS
TAGGED
IMAGES**

 **4G
LTE**

CELLULAR TRAIL CAM

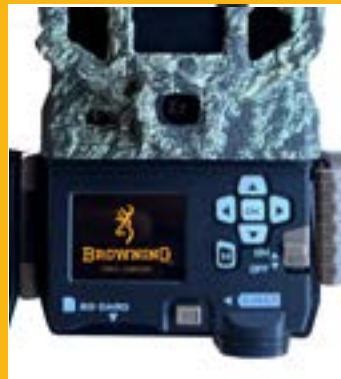
 OPERATES ON THE
AT&T Wireless
4G LTE NETWORK

connected by
verizon

**#1
Rated
APP**



**NEW!
MAPS PRO**



**THE FASTEST
TRANSMISSION
SPEEDS!**

DEFENDER PRO SCOUT MAX HD SOLAR

The Defender Pro Scout Max HD Solar cellular trail camera is built to deliver the very best in picture quality, reliability, and cellular performance. At the core of its design is a built-in solar panel that powers the camera indefinitely with just a few hours of sunlight each day. This powerhouse also features an On-Demand function that allows you to instantly request photos or videos from the field, giving you real-time updates whenever you need them. The ALL HD ALL THE TIME system captures every image in sharp 1080p Full HD, giving you clear, detailed visuals for better decision-making. A vivid 1.5-inch color viewing screen makes setup and in-field review quick and accurate, helping you dial in the perfect angle without guesswork. Other key features include GPS-tagged images, a 100-foot detection range, and a redesigned high gain antenna that locks onto strong signals in even the most remote areas. The autodetect function ensures the camera automatically connects to the best available cellular carrier, so you stay connected no matter where you place it. With invisible IR illumination, the camera stays completely undetectable to both game and people, making it the ultimate low-impact scouting tool for hunters who demand serious performance in the field.

Camera Features

- 46 MP
- ALL HD ALL THE TIME Images
- Invisible IR Night Illumination
- On Demand Pictures and Videos
- Ultra High Gain Cellular Antenna
- Auto Detects the Cell Carrier with the Best Signal in your area
- 100 ft. Invisible Infrared Illumination at Night
- Adjustable IR Flash (Power Save, Fast Motion, Long Range)
- 0.2 Second Trigger Speed
- GPS Tagged Images
- Full HD 1080p Videos with Sound (5 sec.- 2 min. length)
- 100 Ft. Image Detection Range
- 1.5" Color View Screen
- Built-In Solar Panel
- 0.5 Second Recovery Time Between Images
- Illuma-Smart Technology Automatically adjusts IR Flash for Perfect Night Photos
- SD Card Management Options
- Smart IR Video
- Up to 1 Year Battery Life from 8 AA batteries (not included)
- Up to 8 Multi Shot Images
- Up to 8 Rapid Fire Images
- Programmable Picture Delay (1 sec. - 60 min.)
- Picture info bar displays: Time, Date, Temperature, Barometric Pressure Moon Phase, Camera ID
- 12 volt External Power Jack
- Supports up to 512GB SDXC Memory Card
- Ultra High Gain Cellular Antenna

Model# BTC-PSMHDS



ALL HD ALL THE TIME

ALL IMAGES TRANSMITTED IN FULL HD

CELLULAR FUNCTIONS:

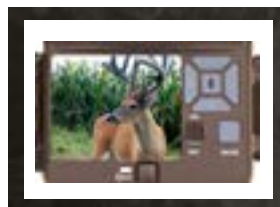
- Operates on a Nationwide 4G LTE Network
- All Images Uploaded in HD
- Uploads Videos
- Create Folders Online to Organize Images
- Month-to-Month Data plans
- No Contracts
- Activate Cameras Only when You Need Them
- Easy to Use Mobile App for Tablets and Smart Phones
- Scheduled or Immediate Image uploads

NEW! RECON FORCE ELITE HP5 ULTRA

The Recon Force Elite HP5 Ultra camera features “Radiant 5” Night Illumination Technology to give you the highest quality HDR night pictures available in any conditions. Also included is the adjustable detection range from 55ft. - 100 ft. and 3 adjustable IR flash modes for optimum picture control at night. Another great feature is the built in 2” color display to preview images and videos right in the field. The Recon Force Elite HP5 Ultra also features the highest quality 46 MP pictures and 1440p Full HD video quality in either 30 or 60 frames per second for the most incredible video clips of game on your property. Additional features include Smart IR Video, which continues to record video footage while game is moving in front of the camera and SD Card Management Options which allow you to overwrite older images on the SD Card if the memory is full. The Recon Force Elite HP5 Ultra is also compatible with up to 512 GB SDXC memory cards.



2” Color
Viewing Screen



Model# BTC-7E-HP5U

Camera Features

- 46 MP
- 2” Color Viewing Screen
- 130 ft. Infrared Flash Range at Night
- Adjustable IR Flash (Power Save, Long Range, Fast Motion)
- 0.1 - 0.7 Second Adjustable Trigger Speed
- 1440p FHD Videos with Sound (5 sec.- 2 min. length)
- Videos can be taken at 30 or 60 frames per second
- Adjustable IR Detection Range up to 100 ft.
- 0.5 Second Recovery Time between Images
- Illuma-Smart Technology Automatically adjusts IR Flash for Perfect Night Photos
- SD Card Management Options
- Smart IR Video
- Selectable Start / Stop Image Timer
- Long Battery Life from 8 AA batteries (not included)
- Battery Meter Functions with Alkaline, Rechargeable and Lithium Batteries
- Up to 8 Multi Shot Images
- Up to 8 Rapid Fire Images
- Programmable Picture Delay (1 sec. - 60 min.)
- Picture info bar displays: Time, Date, Temperature, Moon Phase, Camera ID
- Multilingual Programming Menu
- 12 volt External Power Jack
- Supports up to 512GB SDXC Memory Card (not included)
- ¼” -20 Tripod Socket
- Compact Case Size 5” x 3.5” x 2”
- Metal Tree Mount Bracket
- Timelapse Plus Camera Mode, with Infrared Triggered Pictures
- Compatible with Buck Watch Timelapse viewer software

NEW! SPEC OPS ELITE HP5 ULTRA

The Spec Ops Elite HP5 Ultra features the highest quality 46 MP image resolution on the market today. The invisible, adjustable power “Night Vision” IR illumination reaches out to 100 ft., thanks to the **new RADIANT 5 Night Illumination Technology**. The new Spec Ops Elite HP5 Ultra camera also features an incredible 1440p Full HD video processor, capable of producing stunning video footage of your game that can be easily viewed on a computer or big screen TV. Additional features include a **2” color view screen** and Smart IR Video, which continues to record video footage while game is moving in front of the camera. SD Card Management options allow you to overwrite older images on the SD card if the memory is full. This camera is perfect for surveillance of game animals that are easily spooked, as well as a great security camera around your home or hunting property.



2” Color Viewing Screen



Model# BTC-8E-HP5U

Camera Features

- 46 MP
- 2” Color Viewing Screen
- Invisible “Night Vision” Infrared LED Illumination at Night
- Adjustable IR Flash (Power Save, Fast Motion, Long Range)
- 100 Ft. IR Flash Range
- “RADIANT 5” Night Illumination Technology
- HDR Night Images (High Dynamic Range)
- 1440p FHD Videos with Sound (5 sec. - 2 min. length)
- Adjustable 0.1 - 0.7 Second Trigger Speed
- 0.5 Second Recovery Time
- Adjustable Detection Range up to 80ft.
- Illuma-Smart Technology Automatically adjusts IR Flash for Perfect Night Photos
- SD Card Management Options
- Smart IR Video
- H.264 Video Format
- Selectable Start / Stop Image Timer
- Long Battery Life from 8 AA Batteries (not included)
- Battery Meter Compatible with Alkaline, Rechargeable and Lithium Batteries
- Up to 8 Multi Shot Images
- Up to 8 Rapid Fire Images
- Programmable Picture Delay (1 sec. – 60 min.)
- Picture info bar displays: Time, Date, Temperature, Moon Phase, Barometric Pressure, Camera ID
- Multilingual Programming Menu
- 12 volt External Power Jack
- Supports up to 512GB SDXC Memory Card (not included)
- ¼” -20 Tripod Socket
- Compact Case Size 5” x 3.5” x 2”
- Metal Tree Mount Bracket
- Timelapse Plus Camera Mode, with Infrared Triggered Pictures

STRIKE FORCE DUAL LENS 4K



The most feature rich camera in the New Strike Force line up is the Strike Force Pro DCL. Our flagship Strike Force model features **"Dual Camera Lens Technology"**. We have developed a custom tuned daytime camera lens to produce razor sharp daytime images, while the dedicated night camera lens takes incredibly clear nighttime images. The **new RADIANT 6 Infrared Illumination System** has been integrated to enhance the clarity and range of the night images. The Strike Force Pro DCL also features a lightning fast 0.15 second trigger speed and a 100 ft. motion detection range. Other features include an all-steel adjustable tree mount bracket, Timelapse capability and captures 4K Video with sound. The Strike Force Pro DCL is also compatible with up to 512 GB SDXC memory cards.

Model# BTC-5DCLN



Camera Features

- 46 MP
- Dual Camera Lens Technology
- 1.5" Color View Screen
- 130 ft. Flash Range
- NEW "RADIANT 6" Night Illumination Technology
- Adjustable IR Flash Range (Power Save, Long Range, Fast Motion)
- 0.15 Second Trigger Speed
- 4K Videos with Sound (5 sec. - 2 min. length)
- Wide view 54 degree Viewing Angle
- 100 ft. Detection Range
- 0.35 Second Picture Recovery Time
- Illuma-Smart Technology Automatically adjusts IR Flash for Perfect Night Photos
- SD Card Management
- Long battery life from 6 AA Batteries (not included)
- Up to 8 Multi Shot Images
- Up to 8 Rapid Fire Images
- Smart IR Video
- Programmable Picture Delay (1 sec. - 60 min.)
- Picture info bar displays: Time, Date, Temperature, Moon Phase, Camera ID
- 12 volt External Power Jack
- All-Steel Adjustable Tree Mounting Bracket
- Supports up to 512GB SDXC Memory Card (not included)
- ¼" -20 Tripod Socket
- Compact Case Size 4.25" x 3.25" x 2.5"

DARK OPS DUAL LENS 4K



The Dark Ops Pro DCLN has a new more compact housing and the most robust feature set in our Dark Ops camera series. These cameras feature an Infrared Illumination System to increase picture quality and range at night like never before. The Invisible IR Illumination ensures game or trespassers on your property do not detect the camera while it is capturing images or videos. The Dark Ops Pro DCL Nano features “**Dual Camera Lens Technology**”. This feature incorporates a custom tuned daytime camera lens to produce razor sharp daytime images, while the dedicated night camera lens takes incredibly clear nighttime photos. This camera packs all the performance you would expect with 46 MP picture quality, 4K video with sound, lightning fast 0.15 second trigger speeds, and superior battery life. Additional features include SD Card Management options and Smart IR video to keep recording game during the daytime. The Dark Ops Pro DCL Nano is compatible with up to 512GB SD cards.

Model# BTC-6DCLN



Camera Features

- 46MP
- Dual Camera Lens Technology
- NEW! smaller size 4.25" x 3.5" x 2"
- 1.5" color view screen
- Invisible Night IR Illumination
- 100 ft. flash range
- Wide View 54 degree Viewing Angle
- Adjustable flash range (power save, long range)
- 4K videos with sound (5 sec.- 2 min. length)
- 0.15 second trigger speed
- 0.35 second picture recovery time
- Illuma-Smart Technology Automatically adjusts IR Flash for Perfect Night Photos
- All-Steel adjustable tree mounting bracket
- SD Card Management
- Long battery life from 6 AA batteries (not included)
- Up to 8 multi Shot images
- Up to 8 Rapid Fire images
- Smart IR video
- Programmable picture delay (1 sec. – 60 min.)
- Picture info bar displays: time, date, temperature, moon phase, barometric pressure, camera ID
- 12 volt external power jack
- Supports up to 512GB SDXC memory card (not included)
- ¼" -20 tripod socket
- Timelapse Plus camera mode with IR triggered images
- Compatible with Browning Buck Watch Timelapse viewer software

STRIKE FORCE PRO X 1080



The Strike Force HD Pro X 1080 has been completely updated, featuring a **1.5" color view screen** and an all-steel adjustable mounting bracket for easy installation in the field. Powerful IR illumination allows you to customize your night images with 3 modes of operation; Power Save, Long Range and Fast Motion settings to get the perfect night picture. Other features include SD Card Management features, 1080p Full HD video clips with sound and timelapse capability. The Strike Force HD Pro X 1080 is also compatible with up to 512 GB SDXC memory cards.

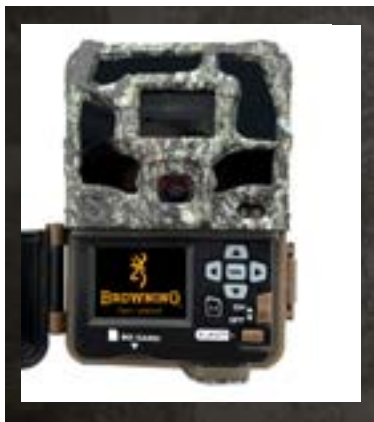
NEW
RADIANT 6
 NIGHT ILLUMINATION TECHNOLOGY
 6 HIGH POWER LEDs

Model# BTC-5PX-1080



Camera Features

- 46 MP
- 1.5 Inch Color View Screen
- 120 ft. Infrared Illumination at Night
- "RADIANT 6" Night Illumination Technology
- Adjustable IR Flash (Power Save, Fast Motion, Long Range)
- 0.22 Second Trigger Speed
- Full HD 1080p Videos with Sound (5 sec.- 2 min. length)
- 80 ft. Image Detection Range
- 0.35 Second Recovery Time Between Images
- Illuma-Smart Technology Automatically adjusts IR Flash for Perfect Night Photos
- SD Card Management Options
- Smart IR Video
- Up to 1 Year Battery Life from 6 AA batteries (not included)
- Up to 8 Multi Shot Images
- Up to 8 Rapid Fire Images
- Selectable Start/ Stop Image Timer
- Programmable Picture Delay (1 sec. - 60 min.)
- Picture info bar displays: Time, Date, Temperature, Moon Phase, Camera ID
- 12 volt External Power Jack
- All-Steel Adjustable Tree Mount Bracket
- Supports up to 512GB SDXC Memory Card (not included)
- ¼" -20 Tripod Socket



The Dark Ops HD Pro X 1080 takes footage of wildlife on your property using a **powerful Invisible Infrared flash** that is completely undetectable. This camera is perfect for animals that are easily spooked, or trespassers on your property. Features for this camera include: **1.5" color screen**, all-steel adjustable tree mount bracket, 0.15 second trigger speeds and adjustable IR flash power at night. The Dark Ops Pro X 1080 also shoots Full HD 1080p video with sound and is compatible with SD cards up to 512GB.



Camera Features

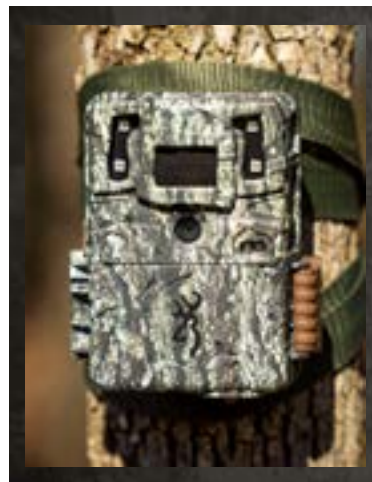
- 46 MP
- 1.5 Inch Color View Screen
- 90 ft. Infrared Illumination at Night
- Adjustable IR Flash (Power Save, Fast Motion, Long Range)
- 0.15 Second Trigger Speed
- Full HD 1080p Videos with Sound (5 sec.- 2 min. length)
- 90 ft. Image Detection Range
- 0.35 Second Recovery Time Between Images
- Illuma-Smart Technology Automatically adjusts IR Flash for Perfect Night Photos
- SD Card Management Options
- Smart IR Video
- Up to 1 Year Battery Life from 6 AA batteries (not included)
- Up to 8 Multi Shot Images
- Up to 8 Rapid Fire Images
- Selectable Start/Stop Image Timer
- Programmable Picture Delay (1 sec. - 60 min.)
- Picture info bar displays: Time, Date, Temperature, Moon Phase, Camera ID, Barometric Pressure
- 12 volt External Power Jack
- All-Steel Adjustable Tree Mount Bracket
- Supports up to 512GB SDXC Memory Card (not included)
- ¼" -20 Tripod Socket



COMMAND OPS ELITE 40

The Command Ops Elite series of cameras has been updated to deliver big performance in a small package. The crisp **40 MP picture resolution** ensures the very best quality pictures of your game, day or night. With fast 0.3 second trigger speeds, you are sure to capture anything that steps out in front of your camera.

The Command Ops Elite series also features 900p HD+ video with sound, to capture the best video of game on your property.



Model# BTC-4E40



Camera Features

- 40 MP
- 80 ft. Infrared Flash Range
- 0.3 Second Trigger Speed
- Infrared LED Illumination at night
- 900p HD+ Videos with Sound (5 sec. - 2 min. length)
- 70 ft. Detection Range
- Illuma-Smart Technology Automatically adjusts IR Flash for Perfect Night Photos
- SD Card Management Feature
- Long Battery Life from 6 AA Batteries (not included)
- Up to 8 Multi Shot Images
- Up to 4 Rapid Fire Images
- Programmable Picture Delay (1 sec. - 60 min.)
- Picture info bar displays: Time, Date, Temperature, Moon Phase, Camera ID
- 12 volt External Power Jack
- Supports up to 32GB SD Card (not included)
- ¼" -20 Tripod Socket
- Compact Case Size 4.5" x 3.5" x 2.5"
- Timelapse Plus Camera Mode
- Compatible with Browning Buck Watch Timelapse Viewer Software

STRIKE FORCE FHDR40

The New Strike Force FHDR40 cameras feature a multitude of upgrades, including the **Gen 2 Night Optics System** along with the Radiant 4 illumination technology. These features greatly enhance the night IR flash modes by delivering greater efficiency in Economy Mode, longer flash ranges in High Power Mode and faster shutter speeds in Fast Motion Modes, resulting in clearer images when game animals are in motion. The HDR image enhancement engine allows you to greatly enhance night images at long ranges. Our adjustable trigger speed feature allows you to select the trigger speed that is right for your camera's location, from 0.135 to 0.7 seconds. Experience high end performance with 40 MP picture quality, and a video processor that produces incredible quality 1080p Full HD video clips with sound.



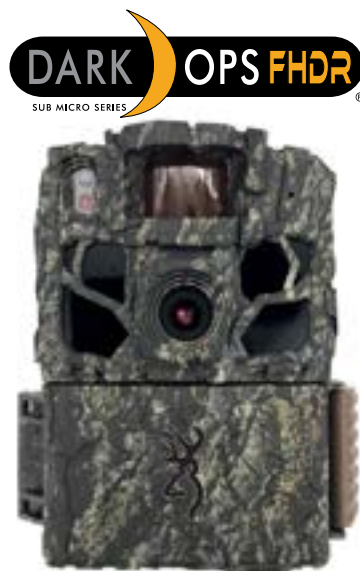
Model# BTC-5FHDR40

Camera Features

- 40 MP
- GEN 2 Night Optics
- 110 ft. Flash Range
- 0.135 - 0.7 Second Adjustable Trigger Speed
- 4 High Power Infrared LEDs for Night Illumination
- 1080p Full HD Videos with Sound (5 sec. - 2 min. length)
- 80 ft. Detection Range (user adjustable)
- SD Card Management
- Up to 8 Multi Shot Images
- Up to 8 Rapid Fire Images
- Smart IR Video
- Selectable Start/Stop Image Timer
- Programmable Picture Delay (1 sec. - 60 min.)
- 0.5 Second Recovery Time
- New "RADIANT 4" Night IR Illumination
- Adjustable Infrared Flash (Economy Mode, High Power Mode, Fast Motion Mode)
- Illuma-Smart Technology Automatically adjusts IR Flash for Perfect Night Photos
- Long battery life
- 12 volt External Power Jack

DARK OPS FHDR40

The Dark Ops FHDR40 camera from Browning features the ability to take HDR night pictures in the field to greatly enhance image quality. The Gen 2 Night Optics System delivers the very best long range night illumination in the field. The new Dark Ops generation also features the Radiant 4 Night IR Illumination, in a wavelength that is invisible, and cannot be detected by animals or humans. The invisible illumination makes this a perfect camera for capturing that elusive buck, or for use in a security application around your hunting lease. Other features include lightning fast 0.135 - 0.7 second adjustable trigger speeds, Full HD 1080p video clips and adjustable IR Illumination with Long Range, Fast Motion and Economy modes, to custom tailor your camera for open fields or wooded areas.



Model# BTC-6FHDR40

Camera Features

- 40 MP
- GEN 2 Night Optics
- 90 ft. Flash Range
- 0.135 - 0.7 Second Adjustable Trigger Speed
- 4 High Power Infrared LEDs for Night Illumination
- 1080p Full HD Videos with Sound (5 sec. - 2 min. length)
- 80 ft. Detection Range (user adjustable)
- SD Card Management
- 12 volt External Power Jack
- ¼" -20 Tripod Socket
- Smart IR Video
- Up to 8 Rapid Fire Images
- Selectable Start/Stop Image Timer
- Selectable Night IR Illumination Modes (Fast Motion, Long Range, Economy)
- Programmable Picture Delay (1 sec. - 60 min.)
- Picture info bar displays: Time, Date, Temperature, Moon Phase, Camera ID, Barometric Pressure
- Supports up to 512GB SDXC Memory Card (not included)
- Compact 4.25" x 3.0" x 2.5

CAMERA SECURITY BOXES



Cellular Security Box Model# BTC-SB-SM2

The New Cellular Security Box has been custom engineered to allow the greatest cellular reception and transmission of any camera security box on the market today. Specially designed cut outs allow for cellular and GPS signals to interact with the built in or external high gain antennas in Browning cellular cameras.

Fits Models:

BTC-PSMHD-AI, BTC-VPHD-AI, BTC-VPHD-L, BTC-PSMHDS-E, BTC-PSM / PSMX, BTC-PSMHD, BTC-VPHD, BTC-4G-V, BTC-VP, BTC-RLDCP, BTC-DWPS Series Cell cameras.



Model# BTC-SB

Spec Ops, Recon Force, Command Ops HD and Patriot Series Cameras

Model# BTC-SB-SM

Strike Force, Dark Ops and Command Ops Pro Cameras

Our camera security boxes have been designed to ensure your trail camera stays where you put it. The all steel construction ensures maximum protection in the field. The added feature of the camouflage exterior makes your camera nearly impossible to detect in the woods. We offer 3 sizes of security boxes to fit specific cameras in our lineup. The security box can be locked using a standard padlock or a Master Lock Python cable (not included).

NEW! CELL CAMERA SECURITY BOX**Model# BTC-SB-C**

Its ultra-durable, all-steel construction delivers top-tier protection against the elements, while the compact, camouflage design makes it nearly invisible in the wild – blending seamlessly into natural surroundings to guard your camera without drawing attention.

Perfectly sized for efficiency and fitted to secure any cellular trail camera model. Wherever you place it, this security box ensures your trail camera stays right where you need it, ready to capture every moment without worry.

Fits Models:

BTC-VPHD-L, BTC-VPHD, BTC-PSMHD-DV, PSMHD-AI

NEW! SECURITY TREE STRAP**Model# BTC-ST5**

Upgrade your camera tree strap with the all-new Security Tree Strap.

Built tough for the outdoors, this 6-foot strap features heavy-duty 1-inch nylon webbing with integrated steel cables for maximum security, keeping your trail camera firmly secured season after season.

Two keys are included for dependable protection in the field.

NEW! MICRO-SOLAR BATTERY PACK



Model# BTC-SBPU

The perfect power source for your trail cameras. The pack has a built in rechargeable Lithium Ion battery that delivers reliable power to your trail cameras. The high charge rate solar cell quickly charges the internal Lithium cell quickly in remote wooded locations. The battery pack has an adapter to universally fit any trail camera you own, and is perfect for standard SD card cameras or the high demands of cellular trail cameras. Includes threaded mounting socket, tree strap and a built in charge meter.

SOLAR BATTERY PACK



Model# BTC-SBP12

The Solar Battery Pack is compatible with all of our trail camera models, and provides a constant power source for your camera in the field. The Power Pack includes 6 AA NiMH rechargeable batteries that are constantly being recharged by the highly efficient solar cell to keep your cameras running strong in the field. The solar pack mounts easily to any tree, or can be used with our line of camera mounts. The solar panel can be easily adjusted to the perfect angle to maximize solar power output.

EXTERNAL BATTERY PACK



Model# BTC-XB

Our External Battery Pack will extend the battery life of your Browning Trail Camera in the field. This micro sized battery pack holds 8 AA batteries in the same easy to use battery tray used in the trail cameras. Other features include a built in battery tester and a twist lock plug to lock the power adapter to your Browning Trail Camera.
(batteries not included)

NEW! RECHARGEABLE LITHIUM ION BATTERY PACKS



Model# BTC-LPC1, BTC-LPC2, BTC-LPC3

The all new Rechargeable Lithium Ion battery packs will increase your battery life in the field by 30%. No need to keep buying AA batteries for all of your cameras. Simply swap out your Lithium battery packs in the field for constant dependable power. Easily rechargeable via USB-C power cord (included).

BTC-LPC1 Fits Models:

BTC-PSMX, BTC-PSMXHD, BTC-PSMHD, BTC-PSMHD-AI, PSMHD-DV, BTC-PSMHD40, all BTC-PSMHDS series

BTC-LPC2 Fits Models:

BTC-5FHD, BTC-6FHD, BTC-5FHDR, BTC-5FHDR40, BTC-6FHDR, BTC-5FHDR40

BTC-LPC3 Fits Models:

BTC-VPHD, BTC-VPHD-AI, BTC-VPHD-L, VPHD-LSF, BTC-7E-HP5, BTC-7E-HP5



ELIMINATE
COSTLY
BATTERIES



CONSTANT
DEPENDABLE
POWER



CHARGE WITH
USB-C CABLE
INCLUDED



ONBOARD
STATUS LED
DISPLAY



EXTENDED RANGE CELL ANTENNA

This antenna allows you to monitor those hard-to-reach spots with confidence, even in areas with weak or unreliable signals. With a 10-foot cable, the antenna can be easily mounted above obstructions, allowing you to maximize signal strength for uninterrupted monitoring. This accessory is compatible with Browning Vision, Vision Pro, and Defender Pro Scout Max HD models and includes all necessary mounting hardware for a straightforward setup.

Model# BTC-LRA2



BATTERIES

Model# BTC-8AA

Our trail camera batteries have been designed to meet the rigorous demands of today's trail cameras. We know that trail cameras are expected to perform across a wide spectrum of temperature extremes and other environmental stresses. Browning batteries are up to the challenge. Our Alkaline batteries are packed 8 AA per pack and are mercury and cadmium free.

SD CARDS

For maximum trail camera performance, we recommend using Browning brand SD cards in your trail cameras. All of our SD cards are SDHC Class 10, ensuring the fastest write speeds for high resolution photos and HD video clips. Our cards are available in 32GB and 64GB capacities.

32GB Model# BTC-32GSD
64GB Model# BTC-64GSD



ECONOMY CAMERA MOUNT



Model# BTC-ECM

Now there is an affordable way to quickly and easily install your Browning Trail Cameras in the field. The Economy Camera Mount easily screws into any tree giving you a perfect mounting platform. Each package contains 3 All-Steel, powder coated screw mounts.

CAMERA TREE MOUNT



Model# BTC-TM

The Camera Tree Mount is the perfect accessory to aid in the placement of your trail cameras. You can now mount your trail cameras to that crooked tree and position the camera perfectly using the built in gimbal mount. The all steel construction ensures there are no plastic pieces to break in the field. The tree mount attaches via a 1/4"-20 threaded insert located in the bottom of most Browning Trail Cameras.

CAMERA T-POST MOUNT



Model# BTC-CTM

The T-Post Camera Mount is the ideal way to mount your trail cameras along the edge of fenced fields. The T-Post camera mount will mount to either side of nearly every T-Post on your farm or hunting property. The adjustable gimbal mount is ideal for aiming your trail camera at the perfect angle in the field. T-Post Mounts are constructed of powder coated steel for maximum life in the field.

CAMERA FIELD MOUNT



Model# BTC-CFM

The Camera Field Mount is the perfect solution for mounting your trail camera in fields or areas where there are no trees. The rugged powder coated All-Steel field mount easily stakes into any terrain. The field mount can easily mount up to 2 cameras in the field, and features easy to use gimbal mounts to mount your cameras at the perfect angle.



BROWNING

TRAIL CAMERAS

Manufactured and Distributed by Prometheus Group, LLC Birmingham, Alabama

Tel: +1 888 618 4496 Email: info@browningtrailcams.com

Fax: +1 888 628 9877 Web: browningtrailcameras.com

Browning trademarks licensed from Browning

