



BROWNING®

TRAIL CAMERAS

BUCK WATCH TIMELAPSE VIEWER PLUS USER MANUAL

The Browning Buck Watch Timelapse Viewer Plus software is a powerful tool that allows you to play back timelapse videos and large folders of still images quickly and easily. The following guide will walk you step by step through the features and operation of the Buck Watch Timelapse Viewer.

User Controls



Open a file of still pictures to play in viewer



Change Viewer Settings Control



Open a timelapse file for viewing



Image Advance Controls



Rewind, Pause, Play Controls



Zoom In, Zoom Out Controls



Activity Search Controls



Save and Share Still Images or Export Video Clips



Timelapse Playback

If the Buck Watch Timelapse software is not installed on your computer, insert the Browning Buck Watch software installation CD that came with your trail camera into the CD drive of your computer. Your computer will auto detect the disk's presence and start the installation. Simply follow the on screen prompts to finish the installation.

To play a timelapse video in your Buck Watch viewer, follow these steps.

1. Insert the SD card containing the timelapse files into the SD card slot in your computer, or your SD card reader.

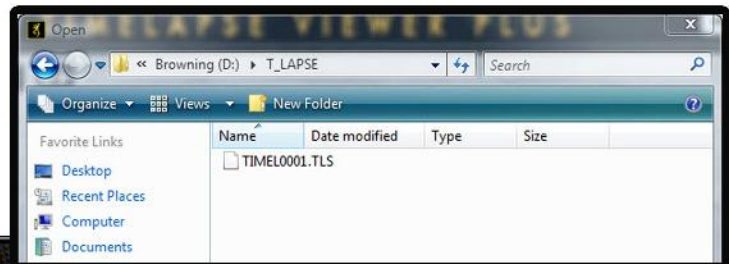
2. Double click on the Buck Watch Timelapse Icon on your desktop.

3. The Buck Watch Timelapse Viewer will open.

4. Click on the "OPEN TIMELAPSE FILES" icon in the top left corner of the viewer.



5. Open the contents of your SD card. You will see a folder named "T_LAPSE". Located inside this folder are your timelapse video clips. The files end with a .TLS extension. Double click on one of these files and your viewer will import the timelapse file into the viewer.



TIMELAPSE PLAYBACK



The following is a description of the controls used to control and playback your timelapse files.

- REWIND** Allows you to play your timelapse video file in reverse.
- PAUSE** Allows you to pause the playback of the current timelapse file.
- PLAY** Allows you to play the current timelapse file. Pressing the PLAY button once plays the file back at a 1x speed. Each time you click the play button, the playback speed increases to 2x, 4x and 8x speeds if desired.
- IMAGE ADVANCE** These controls allow you to step forward or backward through each file, one by one.
- ZOOM** These controls allow you to zoom in or out of the current image displayed. Scroll bars on the side and bottom will appear while zoomed in to allow the user to pan the image shown.

The progress bar under the picture displays which picture file in the timelapse clip you are currently viewing as well as the total number of picture files in the entire clip. You can quickly advance forward or backwards through the images by clicking and dragging the progress bar right or left.

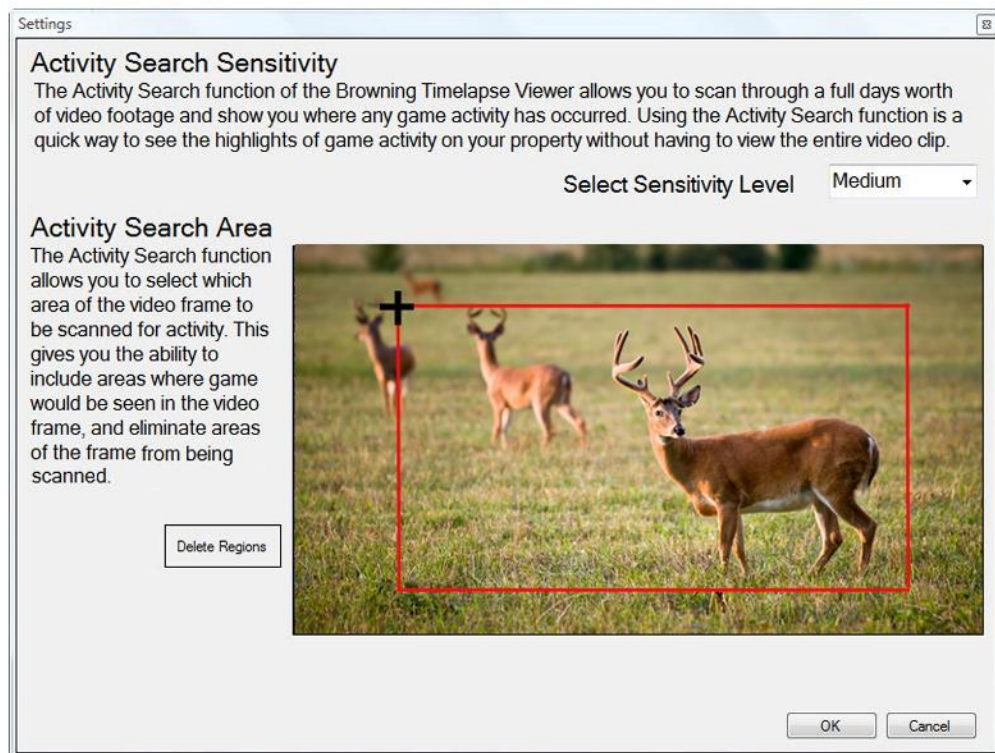


Activity Search



The Activity Search function allows you to view just the pictures that have activity in them. Activity Search will skip over all of the images where no activity was present, thus allowing you to scan through a long timelapse file quickly.

To set the Activity Search parameters, click the SETTINGS button on your control panel. The following window will open.



You can select the area to be searched by placing your cursor on the image. Click and drag a search box in the image. The software will only look for changes in activity for this defined area. By defining a search area, you can eliminate things like cloud movement from your search.

You can also select the sensitivity level using the SELECT SENSITIVITY LEVEL control. If you want to detect small changes in movement, set the sensitivity search to a HIGH setting. A LOW search sensitivity will yield more results, but may have more incidents of grass blowing and tree limbs moving that the search will detect as movement.

Click OK to save your Activity Search settings. Your main viewer screen will appear.

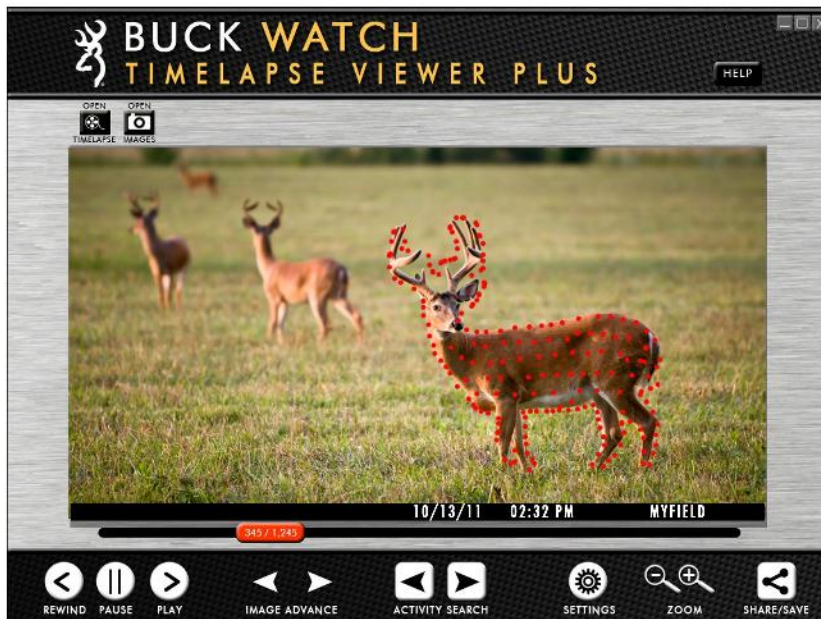


Activity Search (cont.)



Click the right **ACTIVITY SEARCH** button. The Buck Watch software will automatically scan each frame of the timelapse file for a change in activity. The Buck Watch viewer will automatically show the next frame where a change has occurred.

When the Activity Search stops on a image, the activity that caused the viewer to select this picture is highlighted in red dots. This helps you identify small areas of change such as dove or squirrels present that may be difficult to see. To remove the red highlights, simply place your cursor in the picture frame and click one time.



**IMAGE WITH HIGHLIGHTS
SHOWING CHANGES IN THE
ACTIVITY IN THE FIELD**

To search for the next image, simply press the right **ACTIVITY SEARCH** button again. Continue this process until the progress bar reaches the end of the timelapse clip.

You can also search the timelapse clip backwards by using the left **ACTIVITY SEARCH** button.

You can go back and change the **SEARCH SETTINGS** any time and re run the Activity Search using new settings.

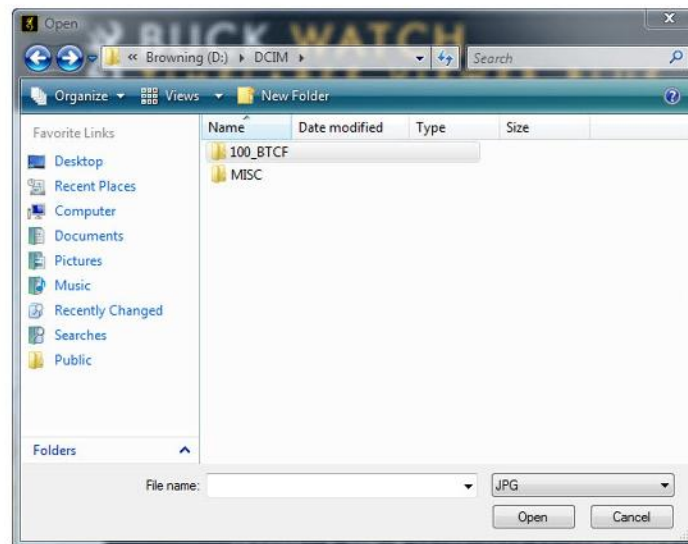


Still Picture Playback

The Buck Watch Timelapse Plus software can also playback still pictures from your files of jpeg images. This is helpful when your camera has been taking pictures for several weeks and you have hundreds of images to review. The Buck Watch viewer acts as a slideshow player for your images. Now you can view hundreds of images as a slideshow instead of having to click on each image individually to view.

To begin reviewing still images on your viewer, click the "OPEN IMAGES" icon in the top left of the viewer main window.

Select the file with your still images and select for viewing. Files from your Browning Trail Camera will be in a folder called "100_BTCF". Highlight the file and click "Open".



The Buck Watch viewer will now open ready to playback your still images.

The active controls while in Still Picture playback are REWIND, PAUSE, PLAY, and IMAGE ADVANCE.

The ACTIVITY SEARCH and ACTIVITY SEARCH SETTING controls are not active.

Save Images and Video Clips

You can save and export individual images or video clips from the Buck Watch software. This feature allows you to just save a highlight or a short video clip of your overall timelapse video. The video clips can be saved in the following formats:

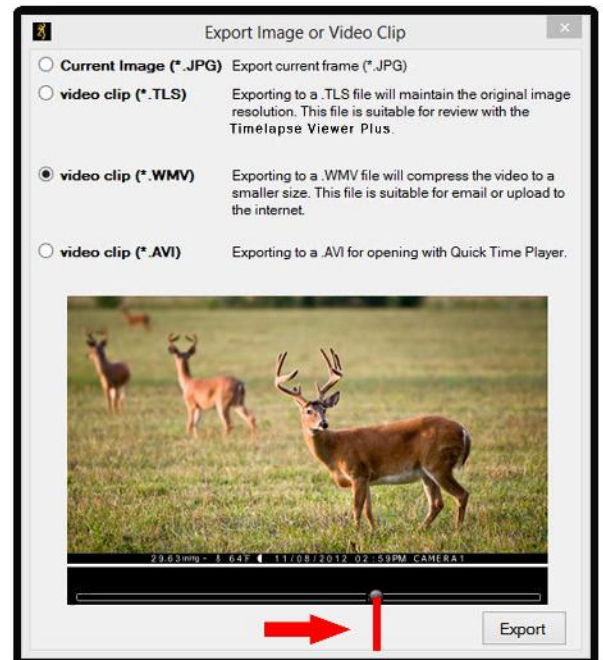
- .TLS file to for playback in the Buck Watch viewer
- .JPEG still images
- .WMV files that can be played back on most PC and Mac computers
- .AVI video file that can be played back on Quicktime viewer software



Saving Video Clips

To export a video clip from your timelapse video, follow these steps:

1. From your main viewer screen, stop the timelapse video on the first frame you would like to use in your video.
2. Click the "SAVE" button on your viewer control panel.
3. Select which type of video you would like to create.
4. Drag the slider on the preview screen to select the last image you would like to appear in your video export.
5. Click the EXPORT button at the bottom of the screen.
6. On the next screen, create a name, and select a location to save your new video. Click on the SAVE button.



Drag slider to select last clip of video file.

Saving Still Images

To save a frame of your timelapse video as a still image, follow these steps:

1. From your main viewer screen, stop the timelapse video on the image you want to export.
2. Click the SAVE button on your viewer control panel.
3. In the Export screen, select the "Current Image (*.jpg)" option.
4. Click the EXPORT button.
5. On the next screen, create a name and select a location to save your image file. Click the SAVE button.

Browning Trail Cameras customer service: 888.618.4496

