

BROWNING[®]

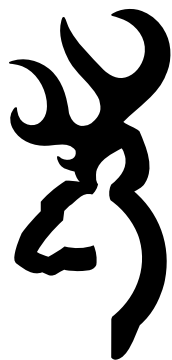
TRAIL CAMERAS

2025

PRODUCT CATALOG

BROWNINGTRAILCAMERAS.COM

WELCOME



BROWNING®

TRAIL CAMERAS

ALL HD ALL THE TIME

ALL IMAGES TRANSMITTED IN FULL HD



USA BASED
TECH
SUPPORT



NEW!
APP
SUPPORT



NEW!
AI
TECHNOLOGY



NEW!
MAPPING
FEATURES

Browning Trail Cameras are designed and manufactured by an avid group of hunters and outdoor enthusiasts who constantly strive to deliver high performance trail cameras to market through innovation and cutting edge technology. With unmatched quality and performance, once you have used a Browning Trail Camera, you will agree that the experience is second to none.

So take a moment and view the many ways we can meet your trail camera needs this year with our impressive selection of 2025 Browning Trail Cameras. Whether you are looking for our exciting NEW cellular cameras that work on nationwide 4G LTE networks, our ground breaking Radiant Night Illumination Technology, our cutting edge dual lens cameras, or our industry defining HD, Full HD, and UHD video technologies, we have the products you need for a successful 2025.

To further underscore our commitment to customer satisfaction, all of our trail cameras and accessories are created using ingenuity, quality workmanship and the finest materials that are backed by a one year manufacturer's warranty.

With all of those things in mind, it's easy to see why people say: Browning Trail Cameras truly are "The Best There Is".

-Your Friends at Browning Trail Cameras

888.618.4496
www.browningtrailcameras.com
info@browningtrailcams.com

STRIKE FORCE WIRELESS APP + **MAPS PRO** ADD-ON



NEW IN 2025!

- ✓ New Cell Cams
- ✓ New App
- ✓ New Unlimited Plans
- ✓ World Class Service



The most complete experience in cell camera technology now offers users the ability to integrate maps and view weather remotely with the **Maps Pro** add-on feature. Get started now and you'll never look back!

MAPS PRO FEATURES

- REAL TIME WEATHER
- CREATE CUSTOM WAYPOINTS
- PROPERTY BOUNDARIES
- LAND OWNER INFO
- TOPO GRADIENT LAYER
- SEE RADAR PRECIPITATION AND CLOUD COVER
- MEASURE AREA AND ACREAGE



FREE
TRIAL PLAN



SHARE WITH
FRIENDS



PHOTOS &
VIDEOS





NEW! AI
DETECTION
& FILTERING



HIGH
GAIN
ANTENNA



ALL HD
IMAGES
VIDEOS



VIEW
PHOTOS
ON PHONE



REAL TIME
RADAR &
WEATHER



NEW!
CUSTOM
MAPS

CELLULAR TRAIL CAM

THE FASTEST TRANSMISSION SPEEDS!

#1
Rated
APP



NEW!
MAPS PRO



GPS
TAGGED
IMAGES



OPERATES ON THE
AT&T Wireless
4G LTE NETWORK

connected by
verizon

NEW! DEFENDER PRO SCOUT MAX HD AI

The 2025 Defender Pro Scout Max HD AI camera features enhanced AI Image recognition software capable of tagging your photos with species information for use in the Strike Force Wireless app while continuing to offer popular features that include ALL HD ALL THE TIME image uploads, 100 ft. Invisible Night IR Illumination, and ultra-fast upload speeds. Other features including the external high gain antenna, 46MP image capability, 1080p Full HD videos and ON DEMAND photos and videos, thus making the 2025 Pro Scout Max HD AI your most valuable scouting tool in the field.

Camera Features

- 46 MP
- NEW Enhanced AI Image Recognition Software
- ALL HD ALL THE TIME Images
- Invisible IR Night Illumination
- On Demand Pictures and Videos
- Ultra High Gain Cellular Antenna
- Pre Installed ATT and Verizon SIM cards
- Auto Detects the Cell Carrier with the Best Signal in your area
- External Port to Connect to Long Range Booster Antenna
- 100 ft. Invisible Infrared Illumination at Night
- Adjustable IR Flash (Power Save, Fast Motion, Long Range)
- 0.25 Second Trigger Speed
- GPS Tagged Images
- Full HD 1080p Videos with Sound (5 sec.- 2 min. length)
- 100 Ft. Image Detection Range
- 0.35 Second Recovery Time Between Images
- Illuma-Smart Technology Automatically adjusts IR Flash for Perfect Night Photos
- SD Card Management Options
- Smart IR Video
- Up to 1 Year Battery Life from 8 AA batteries (not included)
- Up to 8 Multi Shot Images
- Up to 8 Rapid Fire Images
- Programmable Picture Delay (1 sec. – 60 min.)
- Picture info bar displays: Time, Date, Temperature, Barometric Pressure Moon Phase, Camera ID
- 12 volt External Power Jack
- Supports up to 512GB SDXC Memory Card (not included)
- ¼" -20 Tripod Socket

Model# BTC-PSMHD-AI



ALL HD ALL THE TIME

ALL IMAGES TRANSMITTED IN FULL HD

CELLULAR FUNCTIONS:

- Operates on a Nationwide 4G LTE Network
- All Images Uploaded in HD
- Uploads Videos
- Create Folders Online to Organize Images
- Month-to-Month Data plans
- No Contracts
- Activate Cameras Only when You Need Them
- Easy to Use Mobile App for Smart Phones
- Scheduled or Immediate Image uploads
- Verizon and AT&T Options Available



NEW! AI
DETECTION
& FILTERING



GPS
THEFT
PROTECTION



NEW!
CUSTOM
MAPS



REAL TIME
RADAR &
WEATHER



FULL
HD
ALL HD
IMAGES
VIDEOS



VIEW
PHOTOS
ON PHONE

#1
Rated
APP



NEW!
MAPS PRO



CELLULAR
TRAIL CAM



UNLIMITED PLANS!
AS LOW AS \$9.99/MONTH



NEW! DEFENDER VISION PRO HD AI

The All New 2025 Defender Vision Pro HD AI cellular trail camera has been updated to feature enhanced AI recognition of wildlife in the field using the latest advancements in technology. Using the Strike Force Wireless app, the AI image recognition allows users to select what category of images they want to view by reducing the number of unwanted images triggered by squirrels, raccoons, and other curious critters wandering about the field. The Vision Pro HD AI also continues to offer popular features such as ALL HD ALL THE TIME images uploads, 46MP image capability, 1080p Full HD videos with sound, plus ON DEMAND photos and videos from the field. Throw in ultra-fast image uploads utilizing a high gain, long range external antenna, industry leading 0.135 second trigger speeds, and the 110ft. Infrared night illumination and you will soon see why Browning continues to be...The Best There Is.



Model# BTC-VPHD-AI



ALL HD ALL THE TIME

ALL IMAGES TRANSMITTED IN FULL HD

Camera Features

- 46 MP
- NEW Enhanced AI Image Recognition Software
- ALL HD ALL THE TIME Images
- On Demand Pictures and Videos
- Ultra High Gain Cellular Antenna
- Instant photo or video upload capability
- Pre Installed ATT and Verizon SIM cards
- 110 ft. Infrared Illumination at Night
- Adjustable IR Flash (Power Save, Fast Motion, Long Range)
- 0.135 - 0.7 Second Adjustable Trigger Speed
- GPS Theft Protect Security System
- External Port to connect a Booster Antenna
- 1920 x 1080 FHD Videos with Sound (5 sec.- 2 min. length)
- Adjustable Detection Range up to 80 ft.
- GPS Tagged Images
- 0.5 Second Recovery Time between Images
- SD Card Management Options
- Illuma-Smart Technology Automatically adjusts IR Flash for Perfect Night Photos
- Smart IR Video
- Long Battery Life from 8 AA batteries (not included)
- Battery Meter Functions with Alkaline and Lithium Batteries
- Up to 8 Multi Shot Images
- Up to 8 Rapid Fire Images
- Programmable Picture Delay (1 sec. - 60 min.)
- Picture info bar displays: Time, Date, Temperature, Moon Phase, Camera ID
- 12 volt External Power Jack
- Supports up to 512GB SDXC Memory Card (not included)
- ¼" -20 Tripod Socket
- Metal Tree Mount Bracket

CELLULAR FUNCTIONS:

- Operates on a Nationwide 4G LTE Network (Verizon or ATT)
- All Images Uploaded in HD
- Uploads Videos
- GPS tagged images
- Mapping feature
- Create Folders to Manage Content
- Month-to-Month Data plans
- No Contracts
- Activate cameras only when you need them
- Easy to use mobile app
- Scheduled or immediate image uploads

**LIVE
STREAM**

**CELLULAR
TRAIL CAM**

**GPS
THEFT PROTECT**



NEW! AI
DETECTION
& FILTERING



GPS
THEFT
PROTECTION



NEW!
CUSTOM
MAPS



REAL TIME
RADAR &
WEATHER



ALL HD
IMAGES
VIDEOS



HIGH
GAIN
ANTENNA

**4G
LTE**

**#1
Rated
APP**



**NEW!
MAPS PRO**



NEW! DEFENDER VISION PRO LIVESTREAM

The All-New Vision Pro HD Live camera features the ability to livestream pictures and videos from the field in real time. When you receive a notification of activity in front of your camera, you can instantly start a livestream video to see what is happening in your Strike Force Wireless app. All images are transmitted in Full HD to ensure you have the clearest and sharpest pictures possible. This camera operates on a nationwide 4G LTE network providing quick reliable access to your pictures and videos in the most remote locations. The Vision Pro HD Livestream camera also features 110 ft. Night IR Illumination at night, 1080p Full HD videos with sound, GPS Theft Protection and a high gain antenna, making it a true work horse in the field.



Model# BTC-VPHD-L



Camera Features

- 46 MP
- NEW Enhanced AI Image Recognition Software
- ALL HD ALL THE TIME Images
- On Demand Pictures and Videos
- Ultra High Gain Cellular Antenna
- Instant photo or video upload capability
- Pre Installed ATT and Verizon SIM cards
- 110 ft. Infrared Illumination at Night
- Adjustable IR Flash (Power Save, Fast Motion, Long Range)
- 0.135 - 0.7 Second Adjustable Trigger Speed
- GPS Theft Protect Security System
- External Port to connect a Booster Antenna
- 1920 x 1080 FHD Videos with Sound (5 sec.- 2 min. length)
- Adjustable Detection Range up to 80 ft.
- GPS Tagged Images
- 0.5 Second Recovery Time between Images
- Illuma-Smart Technology Automatically adjusts IR Flash for Perfect Night Photos
- Smart IR Video
- Long Battery Life from 8 AA batteries (not included)
- Battery Meter Functions with Alkaline and Lithium Batteries
- Up to 8 Multi Shot Images
- Up to 8 Rapid Fire Images
- Programmable Picture Delay (1 sec. - 60 min.)
- Picture info bar displays: Time, Date, Temperature, Moon Phase, Camera ID
- 12 volt External Power Jack
- 1/4" -20 Tripod Socket
- Metal Tree Mount Bracket

CELLULAR FUNCTIONS:

- Operates on a Nationwide 4G LTE Network (Verizon or ATT)
- All Images Uploaded in HD
- Uploads Videos
- GPS tagged images
- Mapping feature
- Create Folders to Manage Content
- Month-to-Month Data plans
- No Contracts
- Activate cameras only when you need them
- Easy to use mobile app
- Scheduled or immediate image uploads

 **GPS
TAGGED
IMAGES**

 **4G
LTE**

**#1
Rated
APP**



**THE FASTEST
TRANSMISSION
SPEEDS!**

CELLULAR
TRAIL CAM



OPERATES ON THE
AT&T Wireless
4G LTE NETWORK

connected by

verizon

DEFENDER PRO SCOUT MAX HD

The Defender Pro Scout Max HD cellular trail camera has been designed to offer the very best in picture quality, dependability and cellular connectivity. The **ALL HD ALL THE TIME** feature delivers high quality 1080p Full HD images from the field, giving you better intel from your favorite hunting spot. The new on demand feature allows you to request an instant picture or video from the field. Other features include GPS tagged images, 100 Ft. detection range and the all new high gain antenna system to provide the best signal reception in remote locations. The Pro Scout Max HD can be activated on either the ATT or Verizon network. The autodetect function is able to pick the cellular carrier with the best signal at your hunting property. Invisible IR Illumination insures game or humans can not detect its presence in the field. This camera was designed to run for up to 1 year in the field on a set of 8 AA batteries, and can use SD cards up to 512GB.

Camera Features

- 24 MP
- ALL HD ALL THE TIME Images
- Invisible IR Night Illumination
- On Demand Pictures and Videos
- Ultra High Gain Cellular Antenna
- Pre Installed ATT and Verizon SIM cards
- Auto Detects the Cell Carrier with the Best Signal in your area
- 100 ft. Invisible Infrared Illumination at Night
- Adjustable IR Flash (Power Save, Fast Motion, Long Range)
- 0.25 Second Trigger Speed
- GPS Tagged Images
- Full HD 1080p Videos with Sound (5 sec.- 2 min. length)
- 100 Ft. Image Detection Range
- 0.35 Second Recovery Time Between Images
- Illuma-Smart Technology Automatically adjusts IR Flash for Perfect Night Photos
- SD Card Management Options
- Smart IR Video
- Up to 1 Year Battery Life from 8 AA batteries (not included)
- Up to 8 Multi Shot Images
- Up to 8 Rapid Fire Images
- Programmable Picture Delay (1 sec. – 60 min.)
- Picture info bar displays: Time, Date, Temperature, Barometric Pressure Moon Phase, Camera ID
- 12 volt External Power Jack
- Supports up to 512GB SDXC Memory Card (not included)

Model# BTC-PSMHD



ALL HD ALL THE TIME

ALL IMAGES TRANSMITTED IN FULL HD

CELLULAR FUNCTIONS:

- Operates on a Nationwide 4G LTE Network
- All Images Uploaded in HD
- Uploads Videos
- Create Folders Online to Organize Images
- Month-to-Month Data plans
- No Contracts
- Activate Cameras Only when You Need Them
- Easy to Use Mobile App for Tablets and Smart Phones
- Scheduled or Immediate Image uploads
- Verizon and AT&T Options Available

GPS
THEFT PROTECT

NEW
RADIANT 4
NIGHT ILLUMINATION TECHNOLOGY



4 HIGH POWER LEDs



CELLULAR
TRAIL CAM



UNLIMITED PLANS!
AS LOW AS \$9.99/MONTH

#1
Rated
APP



DEFENDER VISION PRO HD

The Defender Vision Pro HD series cellular trail camera is a great scouting camera for your hunting hot spots. Our new **ALL HD ALL THE TIME** feature transmits all of your images in 1080pFull HD. You no longer need to request HD images from your camera. The new photo and video on demand feature allows you to request an immediate picture or video upload from the field. The 4G cellular technology and high gain antenna pair up to transmit more pictures from remote hunting spots to your mobile device or laptop. Industry leading 0.135 second trigger speeds, 110 ft. night illumination range and superior battery life make this camera a real workhorse in the field. The new Vision Pro HD cell camera operates on Verizon or ATT 4G networks for superior reliability.



Camera Features

- 24 MP
- ALL HD ALL THE TIME Images
- On Demand Pictures and Videos
- Ultra High Gain Cellular Antenna
- Instant photo or video upload capability
- Pre Installed ATT and Verizon SIM cards
- 110 ft. Infrared Illumination at Night
- Adjustable IR Flash (Power Save, Fast Motion, Long Range)
- 0.135 - 0.7 Second Adjustable Trigger Speed
- GPS Theft Protect Security System
- External Port to connect a Booster Antenna
- 1920 x 1080 FHD Videos with Sound (5 sec.- 2 min. length)
- Adjustable Detection Range up to 80 ft.
- GPS Tagged Images
- 0.5 Second Recovery Time between Images
- SD Card Management Options
- Illuma-Smart Technology Automatically adjusts IR Flash for Perfect Night Photos
- Smart IR Video
- Long Battery Life from 8 AA batteries (not included)
- Battery Meter Functions with Alkaline and Lithium Batteries
- Up to 8 Multi Shot Images
- Up to 8 Rapid Fire Images
- Programmable Picture Delay (1 sec. - 60 min.)
- Picture info bar displays: Time, Date, Temperature, Moon Phase, Camera ID
- 12 volt External Power Jack
- Supports up to 512GB SDXC Memory Card (not included)
- ¼" -20 Tripod Socket
- Metal Tree Mount Bracket

Model# BTC-VPHD



ALL HD ALL THE TIME

ALL IMAGES TRANSMITTED IN FULL HD

CELLULAR FUNCTIONS:

- Operates on a Nationwide 4G LTE Network (Verizon or ATT)
- All Images Uploaded in HD
- Uploads Videos
- GPS tagged images
- Mapping feature
- Create Folders to Manage Content
- Month-to-Month Data plans
- No Contracts
- Activate cameras only when you need them
- Easy to use mobile app
- Scheduled or immediate image uploads

NEW RADIANT 4

NIGHT ILLUMINATION TECHNOLOGY

4 HIGH POWER LEDs

"Without a doubt, Browning Trail Cameras are the single most reliable game cameras on the market today. I bought my first one in 2013 and it's still going strong today!"

DEREK DIRNBERGER

Browning Trail Cameras Brand Ambassador
and Chief Hunter at "The Break" (Waypoint TV)



NEW! STRIKE FORCE FHDR40

The New Strike Force FHDR cameras feature a multitude of upgrades, including the **Gen 2 Night Optics System** along with the Radiant 4 illumination technology. These features greatly enhance the night IR flash modes by delivering greater efficiency in Economy Mode, longer flash ranges in High Power Mode and faster shutter speeds in Fast Motion Modes, resulting in clearer images when game animals are in motion. The HDR image enhancement engine allows you to greatly enhance night images at long ranges. Our adjustable trigger speed feature allows you to select the trigger speed that is right for your camera's location, from 0.135 to 0.7 seconds. Experience high end performance with 40 MP picture quality, and a video processor that produces incredible quality 1080p Full HD video clips with sound. The Strike Force FHDR40 camera also features SD Card Management options, and Smart IR video, which continues to record video during the day when game is present.



Model# BTC-5FHDR40



Camera Features

- 40 MP
- GEN 2 Night Optics
- 110 ft. Flash Range
- 0.135 – 0.7 Second Adjustable Trigger Speed
- 4 High Power Infrared LEDs for Night Illumination
- 1080p Full HD Videos with Sound (5 sec. - 2 min. length)
- 80 ft. Detection Range (user adjustable)
- 0.5 Second Recovery Time
- New "RADIANT 4" Night IR Illumination
- Adjustable Infrared Flash options (Economy Mode, High Power Mode, Fast Motion Mode)
- Illuma-Smart Technology Automatically adjusts IR Flash for Perfect Night Photos
- SD Card Management
- Long battery life from 6 AA batteries (not included)
- Up to 8 Multi Shot Images
- Up to 8 Rapid Fire Images
- Smart IR Video
- Selectable Start/Stop Image Timer
- Programmable Picture Delay (1 sec. – 60 min.)
- Picture info bar displays: Time, Date, Temperature, Moon Phase, Camera ID
- 12 volt External Power Jack
- Supports up to 512GB SDXC Memory Card (not included)
- ¼" -20 Tripod Socket
- Battery Meter Functions with Alkaline, Rechargeable or Lithium Batteries
- Compact case size 4.25" x 3" x 2.5"
- Timelapse Plus camera mode with IR triggered images
- Compatible with Browning Buck Watch Timelapse Viewer Software

"When we head out on our annual road trip during peak deer season, I head home every chance I get between hunts to see my kids. So I don't always have a lot of time to scout my next hunt location. And because of that I depend on our Browning Trail Cameras to help me get in the right spot immediately after getting back from quality time with my kids and continue to have successful hunts!"

GINA BRUNSON

Browning Trail Cameras Brand Ambassador
and Host at "Addicted to the Outdoors"
(Outdoor Channel)



STRIKE FORCE PRO X 1080



NEW
RADIANT **6**
 NIGHT ILLUMINATION TECHNOLOGY

6 HIGH POWER LEDs



The Strike Force HD Pro X 1080 has been completely updated, featuring a **1.5" color view screen** and an all-steel adjustable mounting bracket for easy installation in the field. Powerful IR illumination allows you to customize your night images with 3 modes of operation; Power Save, Long Range and Fast Motion settings to get the perfect night picture. Other features include SD Card Management features, 1080p Full HD video clips with sound and timelapse capability. The Strike Force HD Pro X 1080 is also compatible with up to 512 GB SDXC memory cards.

Model# BTC-5PX-1080



Camera Features

- 24 MP
- 1.5 Inch Color View Screen
- 120 ft. Infrared Illumination at Night
- "RADIANT 6" Night Illumination Technology
- Adjustable IR Flash (Power Save, Fast Motion, Long Range)
- 0.22 Second Trigger Speed
- Full HD 1080p Videos with Sound (5 sec.- 2 min. length)
- 80 ft. Image Detection Range
- 0.35 Second Recovery Time Between Images
- Illuma-Smart Technology Automatically adjusts IR Flash for Perfect Night Photos
- SD Card Management Options
- Smart IR Video
- Up to 1 Year Battery Life from 6 AA batteries (not included)
- Up to 8 Multi Shot Images
- Up to 8 Rapid Fire Images
- Selectable Start/ Stop Image Timer
- Programmable Picture Delay (1 sec. - 60 min.)
- Picture info bar displays: Time, Date, Temperature, Moon Phase, Camera ID
- 12 volt External Power Jack
- All-Steel Adjustable Tree Mount Bracket
- Supports up to 512GB SDXC Memory Card (not included)
- 1/4" -20 Tripod Socket



NEW RADIANT 6

NIGHT ILLUMINATION TECHNOLOGY

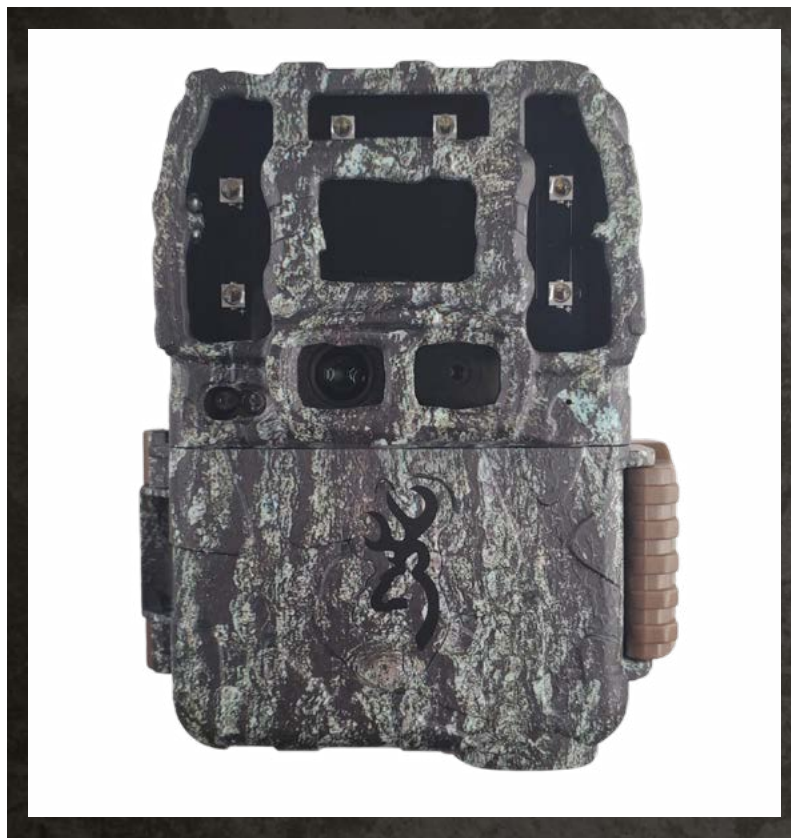
6 HIGH POWER LEDs

"Running a successful outfitting business takes a lot of time and a lot of effort and requires you to be in more than one place at a time. That's why trail cameras can be critical to the success of your outfit each season and I'm happy to say that Browning Trail Cameras get me the information I need, when I need it, and are an important part of our success."

TOM MCMILLAN

Browning Trail Cameras Brand Ambassador and Host at "McMillan" (Outdoor Channel)

NEW! STRIKE FORCE DUAL LENS 4K



The most feature rich camera in the New Strike Force line up is the Strike Force Pro DCL. Our flagship Strike Force model features **"Dual Camera Lens Technology"**. We have developed a custom tuned daytime camera lens to produce razor sharp daytime images, while the dedicated night camera lens takes incredibly clear nighttime images. The **new RADIANT 6 Infrared Illumination System** has been integrated to enhance the clarity and range of the night images. The Strike Force Pro DCL also features a lightning fast 0.15 second trigger speed and a 100 ft. motion detection range. Other features include an all-steel adjustable tree mount bracket, Timelapse capability and captures 4K Video with sound. The Strike Force Pro DCL is also compatible with up to 512 GB SDXC memory cards.

Model# BTC-5DCLN



Camera Features

- 26 MP
- Dual Camera Lens Technology
- 1.5" Color View Screen
- 130 ft. Flash Range
- NEW "RADIANT 6" Night Illumination Technology
- Adjustable IR Flash Range (Power Save, Long Range, Fast Motion)
- 0.15 Second Trigger Speed
- 4K Videos with Sound (5 sec. - 2 min. length)
- Wide view 54 degree Viewing Angle
- 100 ft. Detection Range
- 0.35 Second Picture Recovery Time
- Illuma-Smart Technology Automatically adjusts IR Flash for Perfect Night Photos
- SD Card Management
- Long battery life from 6 AA Batteries (not included)
- Up to 8 Multi Shot Images
- Up to 8 Rapid Fire Images
- Smart IR Video
- Programmable Picture Delay (1 sec. - 60 min.)
- Picture info bar displays: Time, Date, Temperature, Moon Phase, Camera ID
- 12 volt External Power Jack
- All-Steel Adjustable Tree Mounting Bracket
- Supports up to 512GB SDXC Memory Card (not included)
- 1/4" -20 Tripod Socket
- Compact Case Size 4.25" x 3.25" x 2.5"



NEW
RADIANT **4**
NIGHT ILLUMINATION TECHNOLOGY

4 HIGH POWER LEDS

"Not only am I an avid hunter who uses trail cameras for scouting during hunting season, I also enjoy getting unique trail camera images of different species year-round, so I need a trail camera that will last! From ease of setup and great image quality to long battery life and durability, Browning Trail Cameras are by far the best trail cameras that I have ever used!"

CARL DRAKE

Browning Trail Cameras Ambassador and Team Hunter at "The Break" (Waypoint TV)

NEW! DARK OPS FHDR40



The Dark Ops FHDR40 camera from Browning features the ability to take HDR night pictures in the field to greatly enhance image quality. The **Gen 2 Night Optics System** delivers the very best long range night illumination in the field. The new Dark Ops generation also features the Radiant 4 Night IR Illumination, in a wavelength that is invisible, and can not be detected by animals or humans. The invisible illumination makes this a perfect camera for capturing that elusive buck, or for use in a security application around your hunting lease. Other features include lightning fast 0.135 - 0.7 second adjustable trigger speeds, Full HD 1080p video clips and adjustable IR Illumination with Long Range, Fast Motion and Economy modes, to custom tailor your camera for open fields or wooded areas. The Dark Ops FHDR40 also features a battery meter that is compatible with Alkaline, Rechargeable and Lithium batteries.

Model# BTC-6FHDR40



Camera Features

- 40 MP
- GEN 2 Night Optics
- 90 ft. Flash Range
- 0.135 - 0.7 Second Adjustable Trigger Speed
- 4 High Power Infrared LEDs for Night Illumination
- 1080p Full HD Videos with Sound (5 sec. - 2 min. length)
- Invisible Infrared LED Illumination at Night
- 80 ft. Detection Range (user adjustable)
- 0.5 Second Recovery Time
- New "RADIANT 4" Night IR Illumination
- Selectable Night IR Illumination (Fast Motion, Long Range, Economy modes)
- Illuma-Smart Technology Automatically adjusts IR Flash for Perfect Night Photos
- SD Card Management
- Long battery life from 6 AA batteries (not included)
- Up to 8 Multi Shot Images
- Up to 8 Rapid Fire Images
- Smart IR Video
- Selectable Start / Stop Image Timer
- Programmable Picture Delay (1 sec. - 60 min.)
- Picture info bar displays: Time, Date, Temperature, Moon Phase, Camera ID, Barometric Pressure
- 12 volt External Power Jack
- Supports up to 512GB SDXC Memory Card (not included)
- ¼" -20 Tripod Socket
- Battery Meter Functions with Alkaline, Rechargeable or Lithium Batteries
- Compact case size 4.25" x 3." x 2.5
- Timelapse Plus camera mode with IR triggered images

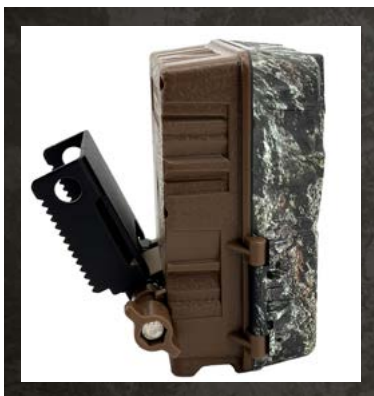


"We're lucky enough to be able to hunt in a bunch of great places across America, but when we get there, we need information to be successful. And our Browning Trail Cameras are great! They have great battery life, they don't miss pictures and videos, and the quality is so good you don't have to wonder what you're looking at!"

GREG ZIPADELLI

Browning Trail Cameras Brand Ambassador and Host at "Drop Zone TV" (Outdoor Channel)

DARK OPS PRO X 1080



The Dark Ops HD Pro X 1080 takes footage of wildlife on your property using a **powerful Invisible Infrared flash** that is completely undetectable. This camera is perfect for animals that are easily spooked, or trespassers on your property. Features for this camera include: **1.5" color screen**, all-steel adjustable tree mount bracket, 0.15 second trigger speeds and adjustable IR flash power at night. The Dark Ops Pro X 1080 also shoots Full HD 1080p video with sound and is compatible with SD cards up to 512GB.

Model# BTC-6PX-1080



Camera Features

- 24 MP
- 1.5 Inch Color View Screen
- 90 ft. Infrared Illumination at Night
- Adjustable IR Flash (Power Save, Fast Motion, Long Range)
- 0.15 Second Trigger Speed
- Full HD 1080p Videos with Sound (5 sec.- 2 min. length)
- 90 ft. Image Detection Range
- 0.35 Second Recovery Time Between Images
- Illuma-Smart Technology Automatically adjusts IR Flash for Perfect Night Photos
- SD Card Management Options
- Smart IR Video
- Up to 1 Year Battery Life from 6 AA batteries (not included)
- Up to 8 Multi Shot Images
- Up to 8 Rapid Fire Images
- Selectable Start/ Stop Image Timer
- Programmable Picture Delay (1 sec. – 60 min.)
- Picture info bar displays: Time, Date, Temperature, Moon Phase, Camera ID, Barometric Pressure
- 12 volt External Power Jack
- All-Steel Adjustable Tree Mount Bracket
- Supports up to 512GB SDXC Memory Card (not included)
- ¼" -20 Tripod Socket



"Browning Trail Cameras are honestly the best trail cameras we have ever used and without question they have become our number one scouting tool to get in the right place at the right time!"

JON BRUNSON

Browning Trail Camera Ambassador and Host at "Addicted to the Outdoors" (Outdoor Channel)

DUAL CAMERA LENS TECHNOLOGY

**PICTURES ARE CAPTURED USING A
SEPARATE, CUSTOM TUNED CAMERA
LENS FOR DAY OR NIGHT SHOTS!**

DARK OPS DUAL LENS 4K



The Dark Ops Pro DCLN has a new more compact housing and the most robust feature set in our Dark Ops camera series. These cameras feature an Infrared Illumination System to increase picture quality and range at night like never before. The Invisible IR Illumination ensures game or trespassers on your property do not detect the camera while it is capturing images or videos. The Dark Ops Pro DCL Nano features **"Dual Camera Lens Technology"**. This feature incorporates a custom tuned daytime camera lens to produce razor sharp daytime images, while the dedicated night camera lens takes incredibly clear nighttime photos. This camera packs all the performance you would expect with 26 MP picture quality, 4K video with sound, lightning fast 0.15 second trigger speeds, and superior battery life. Additional features include SD Card Management options and Smart IR video to keep recording game during the daytime. The Dark Ops Pro DCL Nano is compatible with up to 512GB SD cards.

Model# BTC-6DCLN



Camera Features

- 26MP
- Dual Camera Lens Technology
- NEW Smaller size 4.25" x 3.5" x 2"
- 1.5" color view screen
- Invisible Night IR Illumination
- 100 ft. flash range
- Wide View 54 degree Viewing Angle
- Adjustable flash range (power save, long range)
- 4K videos with sound (5 sec.- 2 min. length)
- 0.15 second trigger speed
- 0.35 second picture recovery time
- Illuma-Smart Technology Automatically adjusts IR Flash for Perfect Night Photos
- All-Steel adjustable tree mounting bracket
- SD Card Management
- Long battery life from 6 AA batteries (not included)
- Up to 8 multi Shot images
- Up to 8 Rapid Fire images
- Smart IR video
- Programmable picture delay (1 sec. – 60 min.)
- Picture info bar displays: time, date, temperature, moon phase, barometric pressure, camera ID
- 12 volt external power jack
- Support up to 512GB SDXC memory card (not included)
- 1/4" -20 tripod socket
- Timelapse Plus camera mode with IR triggered images
- Compatible with Browning Buck Watch Timelapse viewer software



SD CARD CAMERA

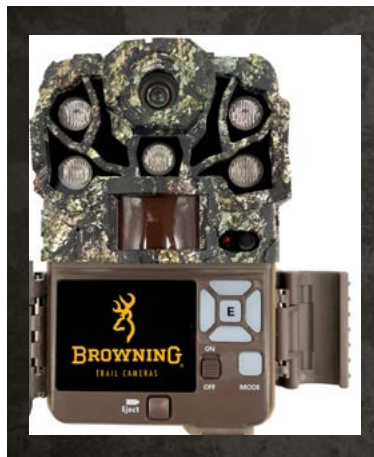
RADIANT 5

NIGHT ILLUMINATION TECHNOLOGY

5 HIGH POWER LEDS



RECON FORCE ELITE HP5



The Recon Force Elite HP5 camera features **“Radiant 5” Night Illumination Technology** to give you the highest quality HDR night pictures available in any conditions. Also included is the adjustable detection range from 55ft. - 100 ft. and 3 adjustable IR flash modes for optimum picture control at night. Another great feature is the built in 2” color display to preview images and videos right in the field. The Recon Force Elite HP5 also features the highest quality 24 MP pictures and 1920 x 1080 Full HD video quality in either 30 or 60 frames per second for the most incredible video clips of game on your property. Additional features include Smart IR Video, which continues to record video footage while game is moving in front of the camera and SD Card Management Options which allow you to overwrite older images on the SD Card if the memory is full. The Recon Force Elite HP5 is also compatible with up to 512 GB SDXC memory cards.

Model# BTC-7E-HP5

Camera Features

- 24 MP
- 2” Color Viewing Screen
- 130 ft. Infrared Flash Range at Night
- Adjustable IR Flash (Power Save, Long Range, Fast Motion)
- 0.1 - 0.7 Second Adjustable Trigger Speed
- 1920 x 1080p FHD Videos with Sound (5 sec.- 2 min. length)
- Videos can be taken at 30 or 60 frames per second
- Adjustable IR Detection Range up to 100 ft.
- 0.5 Second Recovery Time between Images
- Illuma-Smart Technology Automatically adjusts IR Flash for Perfect Night Photos
- SD Card Management Options
- Smart IR Video
- Selectable Start / Stop Image Timer
- Long Battery Life from 8 AA batteries (not included)
- Battery Meter Functions with Alkaline, Rechargeable and Lithium Batteries
- Up to 8 Multi Shot Images
- Up to 8 Rapid Fire Images
- Programmable Picture Delay (1 sec. – 60 min.)
- Picture info bar displays: Time, Date, Temperature, Moon Phase, Camera ID
- Multilingual Programming Menu
- 12 volt External Power Jack
- Supports up to 512GB SDXC Memory Card (not included)
- ¼” -20 Tripod Socket
- Compact Case Size 5” x 3.5” x 2”
- Metal Tree Mount Bracket
- Timelapse Plus Camera Mode, with Infrared Triggered Pictures
- Compatible with Buck Watch Timelapse viewer software



SD CARD CAMERA

A man in camouflage gear, including a cap and jacket, is shown from the chest up, holding a compound bow. He is in a wooded area with green and yellowing leaves. The background is a dense forest with trees and foliage.

RADIANT 5

NIGHT ILLUMINATION TECHNOLOGY

5 HIGH POWER LEDs

"When I set up my trail cameras, I am a video guy! You learn so much about the animals by the way they are behaving and my Browning Trail Cameras deliver the best video and audio quality in the market. THAT's why I choose Browning Trail Cameras!"

HAL SHAFFER

Browning Trail Cameras Brand Ambassador and Host at "Drop Zone" (Outdoor Channel)

SPEC OPS ELITE HP5

The Spec Ops Elite HP5 features the highest quality 24 MP image resolution on the market today. The invisible, adjustable power “Night Vision” IR illumination reaches out to 100 ft., thanks to the **new RADIANT 5 Night Illumination Technology**. The new Spec Ops Elite HP5 camera also features an incredible 1920 x 1080 Full HD video processor, capable of producing stunning video footage of your game that can be easily viewed on a computer or big screen TV. Additional features include a **2” color view screen** and Smart IR Video, which continues to record video footage while game is moving in front of the camera. SD Card Management options allow you to overwrite older images on the SD card if the memory is full. This camera is perfect for surveillance of game animals that are easily spooked, as well as a great security camera around your home or hunting property.



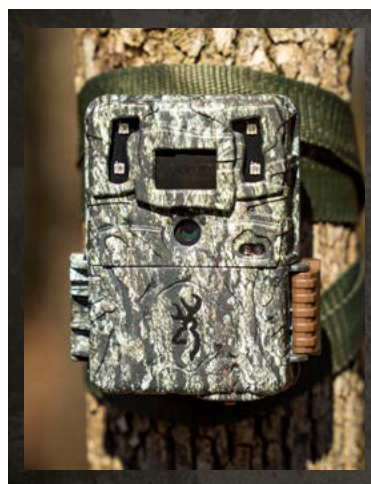
Model# BTC-8E-HP5

Camera Features

- 24 MP
- 2" Color Viewing Screen
- Invisible “Night Vision” Infrared LED Illumination at Night
- Adjustable IR Flash (Power Save, Fast Motion, Long Range)
- 100 Ft. IR Flash Range
- “RADIANT 5” Night Illumination Technology
- HDR Night Images (High Dynamic Range)
- 1920 x 1080 FHD Videos with Sound (5 sec. - 2 min. length)
- Adjustable 0.1 - 0.7 Second Trigger Speed
- 0.5 Second Recovery Time
- Adjustable Detection Range up to 80ft.
- Illuma-Smart Technology Automatically adjusts IR Flash for Perfect Night Photos
- SD Card Management Options
- Smart IR Video
- H.264 Video Format
- Selectable Start / Stop Image Timer
- Long Battery Life from 8 AA Batteries (not included)
- Battery Meter Compatible with Alkaline, Rechargeable and Lithium Batteries
- Up to 8 Multi Shot Images
- Up to 8 Rapid Fire Images
- Programmable Picture Delay (1 sec. – 60 min.)
- Picture info bar displays: Time, Date, Temperature, Moon Phase, Barometric Pressure, Camera ID
- Multilingual Programming Menu
- 12 volt External Power Jack
- Support up to 512GB SDXC Memory Card (not included)
- ¼" -20 Tripod Socket
- Compact Case Size 5" x 3.5" x 2"
- Metal Tree Mount Bracket
- Timelapse Plus Camera Mode, with Infrared Triggered Pictures

NEW! COMMAND OPS ELITE 40

The Command Ops Elite series of cameras has been updated to deliver big performance in a small package. The crisp **40 MP picture resolution** ensures the very best quality pictures of your game, day or night. With fast 0.3 second trigger speeds, you are sure to capture anything that steps out in front of your camera. The Command Ops Elite series also features 900p HD+ video with sound, to capture the best video of game on your property.



Model# BTC-4E40



Camera Features

- 40 MP
- 80 ft. Infrared Flash Range
- 0.3 Second Trigger Speed
- Infrared LED Illumination at night
- 900p HD+ Videos with Sound (5 sec. - 2 min. length)
- 70 ft. Detection Range
- Illuma-Smart Technology Automatically adjusts IR Flash for Perfect Night Photos
- SD Card Management Feature
- Long Battery Life from 6 AA Batteries (not included)
- Up to 8 Multi Shot Images
- Up to 4 Rapid Fire Images
- Programmable Picture Delay (1 sec. - 60 min.)
- Picture info bar displays: Time, Date, Temperature, Moon Phase, Camera ID
- 12 volt External Power Jack
- Supports up to 32GB SD Card (not included)
- 1/4" -20 Tripod Socket
- Compact Case Size 4.5" x 3.5" x 2.5"
- Timelapse Plus Camera Mode
- Compatible with Browning Buck Watch Timelapse Viewer Software

ECONOMY CAMERA MOUNT



Model# BTC-ECM

Now there is an affordable way to quickly and easily install your Browning Trail Cameras in the field. The Economy Camera Mount easily screws into any tree giving you a perfect mounting platform. Each package contains 3 All-Steel, powder coated screw mounts.



CAMERA T-POST MOUNT

The T-Post Camera Mount is the ideal way to mount your trail cameras along the edge of fenced fields. The T-Post camera mount will mount to either side of nearly every T-Post on your farm or hunting property. The adjustable gimbal mount is ideal for aiming your trail camera at the perfect angle in the field. T-Post Mounts are constructed of powder coated steel for maximum life in the field.

Model# BTC-CTM



CAMERA FIELD MOUNT

The Camera Field Mount is the perfect solution for mounting your trail camera in fields or areas where there are no trees. The rugged powder coated All-Steel field mount easily stakes into any terrain. The field mount can easily mount up to 2 cameras in the field, and features easy to use gimbal mounts to mount your cameras at the perfect angle.

Model# BTC-CFM

CAMERA TREE MOUNT



Model# BTC-TM

The Camera Tree Mount is the perfect accessory to aid in the placement of your trail cameras. You can now mount your trail cameras to that crooked tree and position the camera perfectly using the built in gimbal mount. The all steel construction ensures there are no plastic pieces to break in the field. The tree mount attaches via a 1/4"-20 threaded insert located in the bottom of most Browning Trail Cameras.



NEW! LONG RANGE CELL ANTENNA

The new Long Range Cellular Antenna from Browning Trail Cameras will greatly extend the cellular reception of your camera in remote hunting areas. Now that great hunting spot with limited or no cellular reception can be monitored reliably with a boosted signal. The antenna includes 6 ft of cable and can be mounted above obstructions to get the best cell signal possible in remote areas. The long range antenna accessory is compatible with Browning Vision, Vision Pro and Defender Pro Scout Max HD models. Mounting hardware included.

Model # BTC-LRA2



SD CARDS

For maximum trail camera performance, we recommend using Browning brand SD cards in your trail cameras. All of our SD cards are SDHC class 10, ensuring the fastest write speeds for high resolution photos and HD video clips. Our cards are available in 32GB and 64GB capacities.

32GB Model # BTC-32GSD
64GB Model # BTC-64GSD

NEW! RECHARGABLE LITHIUM ION BATTERY PACKS



Model# BTC-LPC1, BTC-LPC2, BTC-LPC3

The all new Rechargeable Lithium Ion battery packs will increase your battery life in the field by 30%. No need to keep buying AA batteries for all of your cameras. Simply swap out your Lithium battery packs in the field for constant dependable power. Easily rechargeable via USB-C power cord (included).

BTC-LPC1 Fits Models:

BCT-PSMX, BTC-PSMXHD, BTC-PSMHD, BTC-PSMHD-AI, BTC-PSMHD40, all BTC-PSMHDS series

BTC-LPC2 Fits Models:

BTC-5FHD, BTC-6FHD, BTC-5FHDR, BTC-5FHDR40, BTC-6FHDR, BTC-5FHDR40

BTC-LPC3 Fits Models:

BTC-VPHD, BTC-VPHD-AI, BTC-VPHD-L, BTC-7E-HP5, BTC-7E-HP5



ELIMINATE
COSTLY
BATTERIES



CONSTANT
DEPENDABLE
POWER



CHARGE WITH
USB-C CABLE
INCLUDED



ONBOARD
STATUS LED
DISPLAY

BATTERIES



Model# BTC-8AA

Our trail camera batteries have been designed to meet the rigorous demands of today's trail cameras. We know that trail cameras are expected to perform across a wide spectrum of temperature extremes and other environmental stresses. Browning batteries are up to the challenge. Our Alkaline batteries are packed 8 AA per pack and are mercury and cadmium free.

NEW! SOLAR CAMERA BATTERY PACK



Model# BTC-SBPU

The Universal Solar Battery pack is the perfect power source for your trail cameras. The pack has a built in rechargeable Lithium Ion battery that delivers reliable power to your trail cameras. The high charge rate solar cell quickly charges the internal Lithium cell quickly in remote wooded locations. The battery pack has an adaptor to universally fit any trail camera you own, and is perfect for standard SD card cameras or the high demands of cellular trail cameras. Includes threaded mounting socket, tree strap and a built in charge meter.

SOLAR CAMERA POWER PACK



Model# BTC-SBP12

The Solar Camera Power Pack is compatible with all of our trail camera models, and provides a constant power source for your camera in the field. The Power Pack includes 6 AA NiMH rechargeable batteries that are constantly being recharged by the highly efficient solar cell to keep your cameras running strong in the field. The solar pack mounts easily to any tree, or can be used with our line of camera mounts. The solar panel can be easily adjusted to the perfect angle to maximize solar power output.

POWER PACK



Model# BTC-XB

Our Trail Camera Power Pack will extend the battery life of your Browning Trail Camera in the field. This micro sized battery pack holds 8 AA batteries in the same easy to use battery tray used in the trail cameras. Other features include a built in battery tester and a twist lock plug to lock the power adapter to your Browning Trail Camera.
(batteries not included)

CAMERA SECURITY BOXES



Cellular Security Box Model# BTC-SB-SM2

The New Cellular Security Box has been custom engineered to allow the greatest cellular reception and transmission of any camera security box on the market today. Specially designed cut outs allow for cellular and GPS signals to interact with the built in or external high gain antennas in Browning cellular cameras.

Fits Models:

BTC-PSMHD-AI, BTC-VPHD-AI, BTC-VPHD-L, BTC-PSMHDS-E, BTC-PSM / PSMX, BTC-PSMHD, BTC-VPHD, BTC-4G-V, BTC-VP, BTC-RLDCP, BTC-DWPS Series Cell cameras.



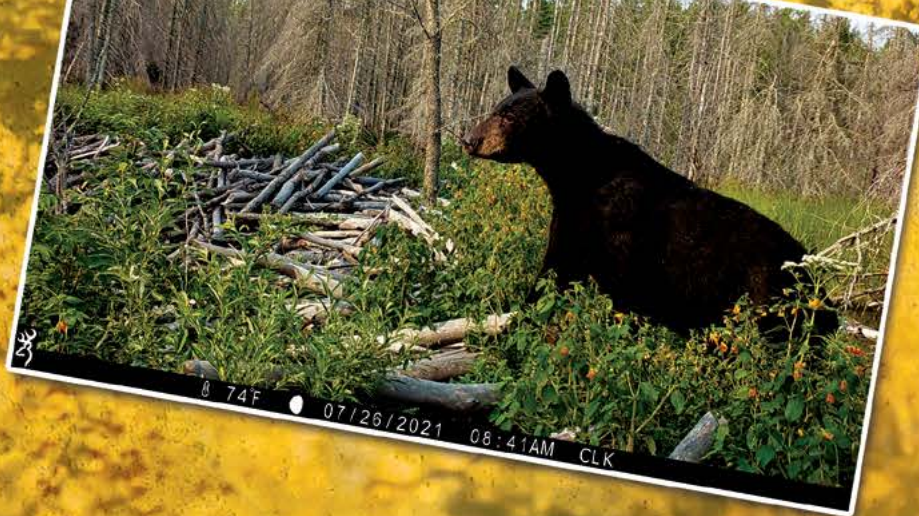
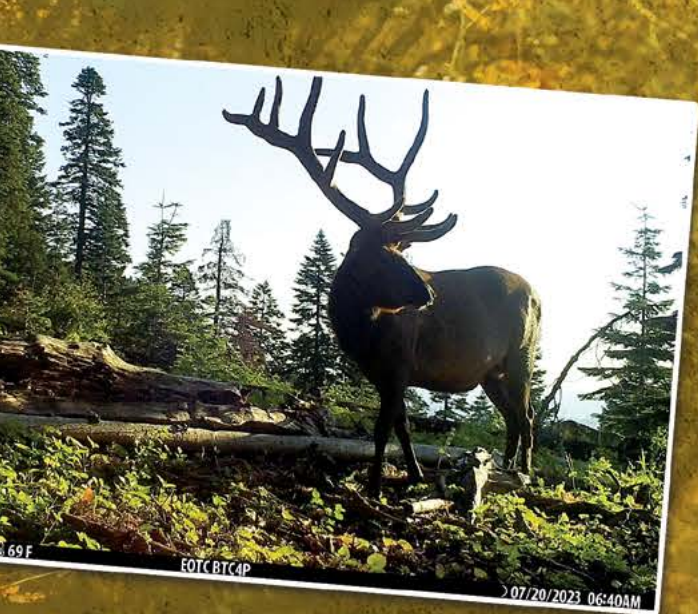
Model# BTC-SB

Spec Ops, Recon Force, Command Ops HD and Patriot Series Cameras

Model# BTC-SB-SM

Strike Force, Dark Ops and Command Ops Pro Cameras

Our camera security boxes have been designed to ensure your trail camera stays where you put it. The all steel construction ensures maximum protection in the field. The added feature of the camouflage exterior makes your camera nearly impossible to detect in the woods. We offer 3 sizes of security boxes to fit specific cameras in our lineup. The security box can be locked using a standard padlock or a Master Lock Python cable (not included).



BROWNING

TRAIL CAMERAS

Manufactured and Distributed by Prometheus Group, LLC Birmingham, Alabama

Tel: +1 888 618 4496

Email: info@browningtrailcams.com

Fax: +1 888 628 9877

Web: browningtrailcameras.com

Browning Trademarks Licensed from Browning

