

**BROWNING**<sup>®</sup>  
TRAIL CAMERAS

**BROWNINGTRAILCAMERAS.COM**

**2023**  
**PRODUCT CATALOG**



“Between farming full time, managing a production company, and investing time in our family, we simply don’t have the time to get out and scout as much as we would like. That’s where Browning Trail Cameras come in and it’s safe to say that they are absolutely critical to our success in the field year after year.”

**KANDI KISKY**

Browning Trail Camera Ambassador and Host at “Whitetail Freaks” (Outdoor Channel)

WELCOME



**BROWNING**®

TRAIL CAMERAS

Browning Trail Cameras are designed and manufactured by an avid group of hunters and outdoor enthusiasts who constantly strive to deliver high performance trail cameras to market through innovation and cutting edge technology. With unmatched quality and performance, once you have used a Browning Trail Camera, you will agree that the experience is second to none.

So please take a moment and let us know how we can meet your trail camera needs this year with our impressive selection of 2023 Browning Trail Cameras. Whether you are looking for our exciting NEW cellular cameras that work on nationwide 4G LTE networks, our ground breaking Radiant Night Illumination Technology, our cutting edge dual lens cameras, or our industry defining HD, Full HD, and UHD video technologies, we have the products you need for a successful 2023.

To further underscore our commitment to customer satisfaction, all of our trail cameras and accessories are created using ingenuity, quality workmanship and the finest materials that are backed by a one year manufacturer’s warranty.

With all of those things in mind, it’s easy to see why people say: Browning Trail Cameras truly are “The Best There Is”.

-Your Friends at Browning Trail Cameras

888.618.4496

[www.browningtrailcameras.com](http://www.browningtrailcameras.com)

[info@browningtrailcams.com](mailto:info@browningtrailcams.com)



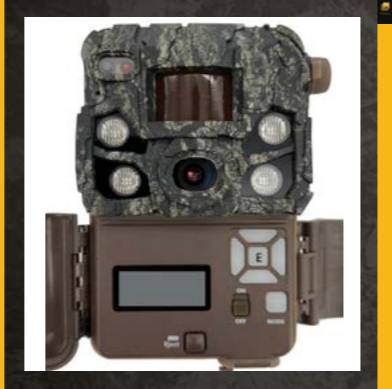
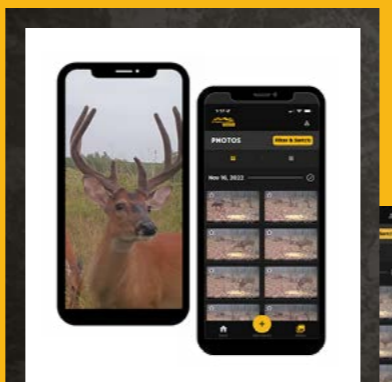
**GPS**  
THEFT PROTECT

**NEW**  
**RADIANT 4**  
NIGHT ILLUMINATION TECHNOLOGY

**4 HIGH POWER LEDs**

**4G**  
LTE

MANAGE WITH  
BROWNING TRAIL  
CAMERAS APP



## DEFENDER VISION PRO

The new Defender Vision Pro series cellular trail camera is a great scouting camera for your hunting hot spots. The 4G cellular technology and built in high gain internal antenna pair up to transmit more pictures from remote hunting spots to your mobile device or laptop. Industry leading 0.135 second trigger speeds, 110 ft. night illumination range and superior battery life make this camera a real workhorse in the field.

The new Vision Pro cell camera can also upload great quality standard or HD images, as well as video clips of game from the field.

**GPS**  
THEFT PROTECT

Model# BTC-VP-ATT  
Model# BTC-VP-VZW

**DEFENDER**  
**VISION PRO**

OPERATES ON THE  
**AT&T Wireless**  
4G LTE NETWORK

connected by  
**verizon**

### Camera Features

- 20 MP
- 110 ft. Infrared Illumination at Night
- Adjustable IR Flash (Power Save, Fast Motion, Long Range)
- 0.135 - 0.7 Second Adjustable Trigger Speed
- GPS Theft Protect Security System
- External Port to connect a Booster Antenna
- 1920 x 1080 FHD Videos with Sound (5 sec.- 2 min. length)
- Adjustable Detection Range up to 80 ft.
- GPS Tagged Images
- 0.5 Second Recovery Time between Images
- Illuma-Smart Technology Automatically adjusts IR Flash for Perfect Night Photos
- AI Tagged Images
- Night Picture Colorization
- SD Card Management Options
- Smart IR Video
- Long Battery Life from 8 AA batteries (not included)
- Battery Meter Functions with Alkaline and Lithium Batteries
- Up to 8 Multi Shot Images
- Up to 8 Rapid Fire Images
- Programmable Picture Delay (1 sec. - 60 min.)
- Picture info bar displays: Time, Date, Temperature, Moon Phase, Camera ID
- 12 volt External Power Jack
- Supports up to 512GB SDXC Memory Card (not included)
- ¼" -20 Tripod Socket
- Metal Tree Mount Bracket

### CELLULAR FUNCTIONS:

- Operates on a nationwide 4G LTE Network (Verizon or ATT)
- Uploads standard images
- Uploads HD images
- Uploads Video Clips
- GPS tagged images
- Mapping feature
- Email / Text images
- Create and Manage footage in Folders
- Month-to-Month Data plans
- No Contracts
- Activate cameras only when you need them
- Easy to use mobile app
- ATT and Verizon provider options
- Scheduled or immediate image uploads

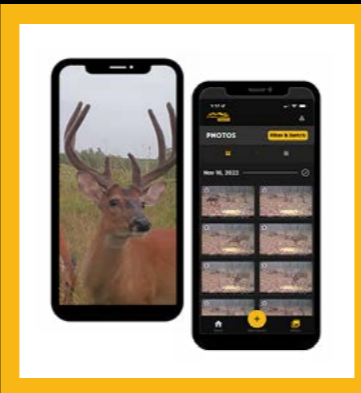


NEW  
**RADIANT 6**  
NIGHT ILLUMINATION TECHNOLOGY

6 HIGH POWER LEDs



MANAGE WITH  
BROWNING TRAIL  
CAMERAS APP



## DEFENDER PRO SCOUT MAX

Our new Defender Pro Scout Max cellular trail camera is the perfect cellular trail camera to scout your favorite hunting property 24/7. This camera was designed to run for up to 1 year in the field on a set of 8 AA batteries. The high resolution camera sensor paired with fast trigger speeds and cellular technology, the New Defender Pro Scout Max will soon be your “go to” solution to see what’s visiting your green fields and running your trail system. Other features include GPS tagged images, 100 Ft. detection range and the all new **RADIANT 6 Night Illumination Technology**.

Camera can be activated on either the ATT or Verizon network.



### Camera Features

- 20 MP
- Built in chipset for Verizon or ATT activation
- Pre Installed ATT and Verizon SIM cards
- 120 ft. Infrared Illumination at Night
- NEW “RADIANT 6” Night Illumination Technology
- Adjustable IR Flash (Power Save, Fast Motion, Long Range)
- 0.25 Second Trigger Speed
- GPS Tagged Images
- 1600 x 900 HD+ Videos with Sound (5 sec.- 2 min. length)
- 100 Ft. Image Detection Range
- 0.35 Second Recovery Time Between Images
- Illuma-Smart Technology Automatically adjusts IR Flash for Perfect Night Photos
- SD Card Management Options
- Smart IR Video
- Up to 1 Year Battery Life from 8 AA batteries (not included)
- Up to 8 Multi Shot Images
- Up to 8 Rapid Fire Images
- Programmable Picture Delay (1 sec. - 60 min.)
- Picture info bar displays: Time, Date, Temperature, Moon Phase, Camera ID
- 12 volt External Power Jack
- Supports up to 512GB SDXC Memory Card (not included)
- ¼” -20 Tripod Socket

Model# BTC-PSM



### CELLULAR FUNCTIONS:

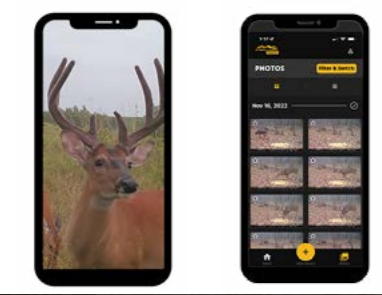
- Operates on a Nationwide 4G LTE Network
- Uploads Standard Images
- Uploads HD Images
- Email / Text Images
- Create Folders Online to Organize Images
- Month-to-Month Data plans
- No Contracts
- Activate Cameras Only when You Need Them
- Easy to Use Mobile App for Tablets and Smart Phones
- Scheduled or Immediate Image uploads
- Verizon and AT&T Options Available

NEW  
**RADIANT 6**  
NIGHT ILLUMINATION TECHNOLOGY

6 HIGH POWER LEDs



MANAGE WITH THE BROWNING TRAIL CAMERAS APP



**DUAL CARRIER DEVICE**  
NEW Autodetect feature to pick the cellular carrier with the best signal on your property.



## PRO SCOUT MAX EXTREME

Model# BTC-PSMX



The new Defender Pro Scout Max Extreme cellular trail camera has always been known for delivering high quality images from the field. New for 2023, high quality video clips can now be uploaded as well, giving you better intel from your favorite hunting spot. Other features include GPS tagged images, 100 Ft. detection range and the all new **RADIANT 6 Night Illumination Technology** that provides superior night illumination out to 110 ft. The Pro Scout Max Extreme can be activated on either the ATT or Verizon network. Also new for 2023, an autodetect function to pick the cellular carrier with the best signal at your hunting property. This camera was designed to run for up to 1 year in the field on a set of 8 AA batteries, and can use SD cards up to 512GB.

### Camera Features

- 22 MP
- Built in chipset for Verizon or ATT activation
- Pre Installed ATT and Verizon SIM cards
- 110 ft. Invisible Infrared Illumination at Night
- Adjustable IR Flash (Power Save, Fast Motion, Long Range)
- 0.135 - 0.7 Second Adjustable Trigger Speed
- 1920 x 1080 FHD Videos with Sound (5 sec.- 2 min. length)
- Adjustable Detection Range up to 100 ft.
- GPS Tagged Images
- 0.5 Second Recovery Time between Images
- Illuma-Smart Technology Automatically adjusts IR Flash for Perfect Night Photos
- AI Tagged Images
- Night Picture Colorization
- SD Card Management Options
- Smart IR Video
- Long Battery Life from 8 AA batteries (not included)
- Battery Meter Functions with Alkaline and Lithium Batteries
- Up to 8 Multi Shot Images
- Up to 8 Rapid Fire Images
- Programmable Picture Delay (1 sec. - 60 min.)
- Picture info bar displays: Time, Date, Temperature, Moon Phase, Camera ID
- 12 volt External Power Jack
- Supports up to 512GB SDXC Memory Card (not included)
- ¼" -20 Tripod Socket

### CELLULAR FUNCTIONS:

- Operates on a nationwide 4G LTE Network (Verizon or ATT)
- Dual Carrier technology allows the customer to decide between ATT or Verizon networks
- Uploads Standard Images
- Uploads HD Images or Video clips
- Email / Text Images or video clips
- Create and Manage footage in Folders
- Month-to-Month Data plans
- No Contracts
- Activate cameras only when needed
- Easy to use mobile app
- ATT and Verizon provider options
- Scheduled or immediate image uploads



6 HIGH POWER LEDs

*"Because I'm on a tractor most of the fall, I don't have a lot of time to get out and scout a lot of places. So it's almost a necessity that my trail cameras are not only dependable, but capture the best quality images and videos possible. That's why we choose Browning Trail Cameras."*

**DON KISKY**  
 Browning Trail Camera Ambassador and Host at "Whitetail Freaks" (Outdoor Channel)



## STRIKE FORCE FULL HD

The Strike Force FHD camera features a multitude of great features. The new "Radiant" LED Illumination System enhances night time picture and video illumination like never before. The new Radiant 4 illumination technology greatly enhances the night IR flash modes by delivering greater efficiency in Economy Mode, longer flash ranges in High Power Mode and faster shutter speeds in Fast Motion Modes, resulting in clearer images when game animals are in motion. The new adjustable trigger speed feature allows you to select the trigger speed that is right for your camera's location, from 0.135 to 0.7 seconds. Experience high end performance with 22 MP picture quality, and a video processor that produces incredible quality 1080p Full HD video clips with sound. The Strike Force FHD camera also features SD Card Management options, and Smart IR video, which continues to record video during the day when game is present.



## Model# BTC-5FHD



### Camera Features

- 22 MP
- 110 ft. Flash Range
- 0.135 - 0.7 Second Adjustable Trigger Speed
- 4 High Power Infrared LEDs for Night Illumination
- 1080p Full HD Videos with Sound (5 sec. - 2 min. length)
- 80 ft. Detection Range (user adjustable)
- 0.5 Second Recovery Time
- New "RADIANT 4" Night IR Illumination
- Adjustable Infrared Flash options (Long Range, Fast Motion, Economy modes)
- Illuma-Smart Technology Automatically adjusts IR Flash for Perfect Night Photos
- SD Card Management
- Long battery life from 6 AA batteries (not included)
- Up to 8 Multi Shot Images
- Up to 8 Rapid Fire Images
- Smart IR Video
- Selectable Start/Stop Image Timer
- Programmable Picture Delay (1 sec. - 60 min.)
- Picture info bar displays: Time, Date, Temperature, Moon Phase, Camera ID
- 12 volt External Power Jack
- Supports up to 512GB SDXC Memory Card (not included)
- 1/4" -20 Tripod Socket
- Battery Meter Functions with Alkaline, Rechargeable or Lithium Batteries
- Compact case size 4.25" x 3." x 2.5"
- Timelapse Plus camera mode with IR triggered images

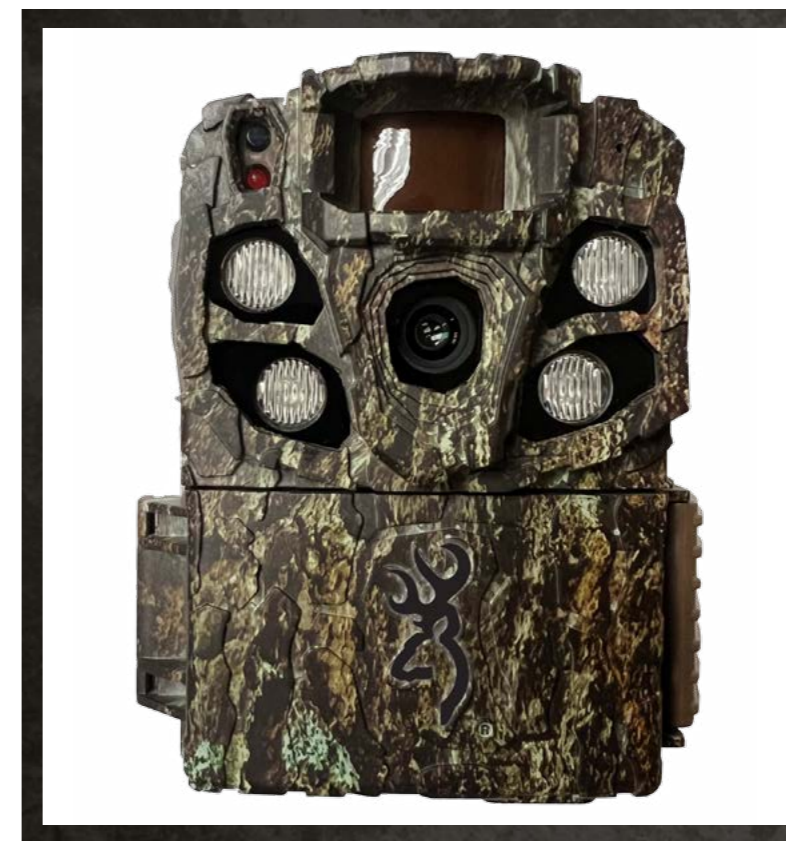


“Without a doubt, Browning Trail Cameras are the single most reliable game cameras on the market today. I bought my first one in 2013 and it’s still going strong today!”

**DEREK DIRNBERGER**

Browning Trail Cameras Brand Ambassador and Chief Hunter at “The Break” (Waypoint TV)

## STRIKE FORCE FHD EXTREME



The new Strike Force FHD cameras feature a multitude of upgrades for 2023. The new Radiant 4 illumination technology greatly enhances the night IR flash modes by delivering greater efficiency in Economy Mode, longer flash ranges in High Power Mode and faster shutter speeds in Fast Motion Modes, resulting in clearer images when game animals are in motion. The **new night time HDR image enhancement engine** allows you to greatly enhance night images at long ranges. Our adjustable trigger speed feature allows you to select the trigger speed that is right for your camera’s location, from 0.135 to 0.7 seconds. Experience high end performance with 24 MP picture quality, and a video processor that produces incredible quality 1080p Full HD video clips with sound. The Strike Force FHD camera also features SD Card Management options, and Smart IR video, which continues to record video during the day when game is present.

Model# BTC-5FHDX



## Camera Features

- 24 MP
- 110 ft. Flash Range
- 0.135 – 0.7 Second Adjustable Trigger Speed
- 4 High Power Infrared LEDs for Night Illumination
- 1080p Full HD Videos with Sound (5 sec. - 2 min. length)
- HDR Night Images
- 80 ft. Detection Range (user adjustable)
- 0.5 Second Recovery Time
- New “RADIANT 4” Night IR Illumination
- Adjustable Infrared Flash options (Long Range, Fast Motion, Economy modes)
- Illuma-Smart Technology Automatically adjusts IR Flash for Perfect Night Photos
- SD Card Management
- Long battery life from 6 AA batteries (not included)
- Up to 8 Multi Shot Images
- Up to 8 Rapid Fire Images
- Smart IR Video
- Selectable Start/Stop Image Timer
- Programmable Picture Delay (1 sec. – 60 min.)
- Picture info bar displays: Time, Date, Temperature, Moon Phase, Camera ID
- 12 volt External Power Jack
- Supports up to 512GB SDXC Memory Card (not included)
- 1/4” -20 Tripod Socket
- Battery Meter Functions with Alkaline, Rechargeable or Lithium Batteries
- Compact case size 4.25” x 3.” x 2.5”
- Timelapse Plus camera mode with IR triggered images



*When we head out on our annual road trip during peak deer season, I head home every chance I get between hunts to see my kids. So I don't always have a lot of time to scout my next hunt location. And because of that I depend on our Browning Trail Cameras to help me get in the right spot immediately after getting back from quality time with my kids and continue to have successful hunts!*

**GINA BRUNSON**  
 Browning Trail Cameras Brand Ambassador and Host at "Addicted to the Outdoors" (Outdoor Channel)

## STRIKE FORCE PRO X 1080



The Strike Force HD Pro X 1080 has been completely updated for 2023, featuring a **1.5" color view screen** and an all-steel adjustable mounting bracket for easy installation in the field. Powerful IR illumination allows you to customize your night images with 3 modes of operation; Power Save, Long Range and Fast Motion settings to get the perfect night picture. Other features include SD card management features, 1080p Full HD video clips with sound and timelapse capability. The Strike Force HD Pro X 1080 is also compatible with up to 512 GB SDXC memory cards.

**NEW**  
**RADIANT 6**  
 NIGHT ILLUMINATION TECHNOLOGY  
 6 HIGH POWER LEDs

## Model# BTC-5PX-1080



### Camera Features

- 24 MP
- 1.5 Inch Color View Screen
- 120 ft. Infrared Illumination at Night
- NEW "RADIANT 6" Night Illumination Technology
- Adjustable IR Flash (Power Save, Fast Motion, Long Range)
- 0.22 Second Trigger Speed
- Full HD 1080p Videos with Sound (5 sec.- 2 min. length)
- 80 ft. Image Detection Range
- 0.35 Second Recovery Time Between Images
- Illuma-Smart Technology Automatically adjusts IR Flash for Perfect Night Photos
- SD Card Management Options
- Smart IR Video
- Up to 1 Year Battery Life from 6 AA batteries (not included)
- Up to 8 Multi Shot Images
- Up to 8 Rapid Fire Images
- Selectable Start/ Stop Image Timer
- Programmable Picture Delay (1 sec. - 60 min.)
- Picture info bar displays: Time, Date, Temperature, Moon Phase, Camera ID
- 12 volt External Power Jack
- All-Steel Adjustable Tree Mount Bracket
- Supports up to 512GB SDXC Memory Card (not included)
- 1/4" -20 Tripod Socket





**NEW**  
**RADIANT 6**  
 NIGHT ILLUMINATION TECHNOLOGY

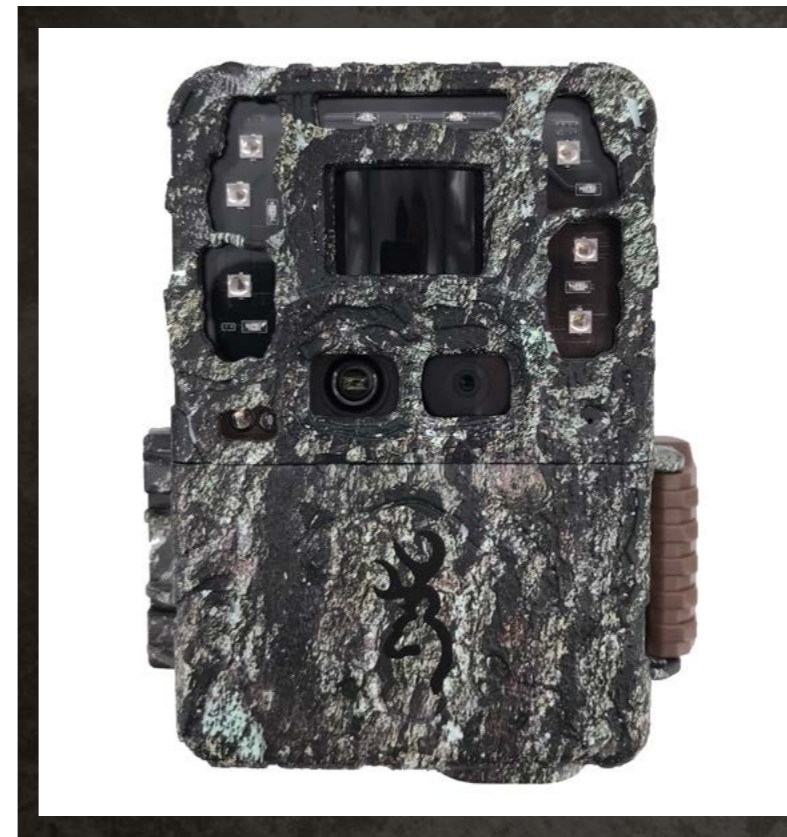
**6 HIGH POWER LEDs**

**“Running a successful outfitting business takes a lot of time and a lot of effort and requires you to be in more than one place at a time. That’s why trail cameras can be critical to the success of your outfit each season and I’m happy to say that Browning Trail Cameras get me the information I need, when I need it, and are an important part of our success.”**

**TOM MCMILLAN,**

Browning Trail Cameras Brand Ambassador and Host at “McMillan” (Outdoor Channel)

**STRIKE FORCE PRO DCL**



The most feature rich camera in the Strike Force line up is the Strike Force Pro DCL. Our flagship Strike Force model features **“Dual Camera Lens Technology”**. We have developed a custom tuned daytime camera lens to produce razor sharp daytime images, while the dedicated night camera lens takes incredibly clear nighttime images. The **new RADIANT 6 Infrared Illumination System** has been integrated to enhance the clarity and range of the night images. The Strike Force Pro DCL also features a lightning fast 0.15 second trigger speed and a 100 ft. motion detection range. Other features include an all-steel adjustable tree mount bracket, Timelapse capability and captures 1080p Full HD video with sound. The Strike Force Pro DCL is also compatible with up to 512 GB SDXC memory cards.

**Model# BTC-50CL**



**Camera Features**

- 26 MP
- Dual Camera Lens Technology
- 1.5" Color View Screen
- 130 ft. Flash Range
- NEW “RADIANT 6” Night Illumination Technology
- Adjustable IR Flash Range (Power Save, Long Range, Fast Motion)
- 0.15 Second Trigger Speed
- 1920 x 1080 Full HD Videos with Sound (5 sec. - 2 min. length)
- Wide view 54 degree Viewing Angle
- 100 ft. Detection Range
- 0.35 Second Picture Recovery Time
- Illuma-Smart Technology Automatically adjusts IR Flash for Perfect Night Photos
- SD Card Management
- Long battery life from 6 AA Batteries (not included)
- Up to 8 Multi Shot Images
- Up to 8 Rapid Fire Images
- Smart IR Video
- Programmable Picture Delay (1 sec. - 60 min.)
- Picture info bar displays: Time, Date, Temperature, Moon Phase, Camera ID
- 12 volt External Power Jack
- All-Steel Adjustable Tree Mounting Bracket
- Supports up to 512GB SDXC Memory Card (not included)
- ¼" -20 Tripod Socket
- Compact Case Size 4.25" x 3.25" x 2.5"

NEW  
**RADIANT 4**  
 NIGHT ILLUMINATION TECHNOLOGY

4 HIGH POWER LEDs



“Not only am I an avid hunter who uses trail cameras for scouting during hunting season, I also enjoy getting unique trail camera images of different species year-round, so I need a trail camera that will last! From ease of setup and great image quality to long battery life and durability, Browning Trail Cameras are by far the best trail cameras that I have ever used!”

**ANDREA ROTHOVE**

Browning Trail Cameras Ambassador and Huntress View Founder and Owner

DARK OPS FHD



The Dark Ops Full HD cameras from Browning feature an upgraded image processor that produces amazing 1080p Full HD videos of game on your property. The new Dark Ops Full HD also features the all new Radiant 4 Night IR Illumination, in a wavelength that is invisible, and can not be detected by animals or humans. The invisible illumination makes this a perfect camera for camera shy bucks, or for use in a security application on your property. Other features include lightning fast 0.135 - 0.7 second adjustable trigger speeds and adjustable IR Illumination with Long Range and Economy modes, to custom tailor your camera for open fields or wooded areas. The Dark Ops Full HD also features a battery meter that is compatible with Alkaline, Rechargeable and Lithium batteries.

Model# BTC-6FHD



Camera Features

- 22 MP
- 90 ft. Flash Range
- 0.135 - 0.7 Second Adjustable Trigger Speed
- 4 High Power Infrared LEDs for Night Illumination
- 1080p Full HD Videos with Sound (5 sec. - 2 min. length)
- Invisible Infrared LED Illumination at Night
- 80 ft. Detection Range (user adjustable)
- 0.5 Second Recovery Time
- New "RADIANT 4" Night IR Illumination
- Selectable Night IR Illumination (Fast Motion, Long Range, Economy modes)
- Illuma-Smart Technology Automatically adjusts IR Flash for Perfect Night Photos
- SD Card Management
- Long battery life from 6 AA batteries (not included)
- Up to 8 Multi Shot Images
- Up to 8 Rapid Fire Images
- Smart IR Video
- Selectable Start / Stop Image Timer
- Programmable Picture Delay (1 sec. - 60 min.)
- Picture info bar displays: Time, Date, Temperature, Moon Phase, Camera ID, Barometric Pressure
- 12 volt External Power Jack
- Supports up to 512GB SDXC Memory Card (not included)
- ¼" -20 Tripod Socket
- Battery Meter Functions with Alkaline, Rechargeable or Lithium Batteries
- Compact case size 4.25" x 3." x 2.5
- Timelapse Plus camera mode with IR triggered images



NEW

# RADIANT 4

NIGHT ILLUMINATION TECHNOLOGY

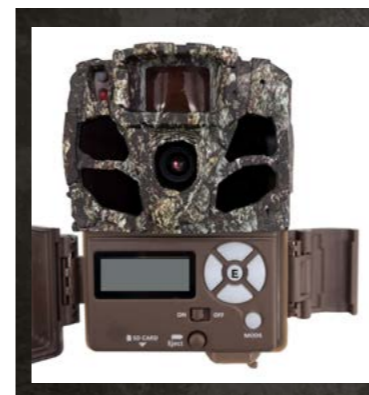
4 HIGH POWER LEDs

"I'm fortunate to get to hunt away from home a few times a year in a few different places, but it's almost impossible to be able to go scout all of those places before I get there. So that's why I need great cameras to get the scouting done when I'm not around, and that's why I choose Browning Trail Cameras!"

**CARL DRAKE**

Browning Trail Cameras Brand Ambassador and Team Hunter at "The Break" (Waypoint TV)

## DARK OPS FHD EXTREME



The 2023 Dark Ops Full HD Extreme cameras from Browning features the ability to take HDR night pictures in the field to greatly enhance image quality. The new Dark Ops generation also features the all new Radiant 4 Night IR Illumination, in a wavelength that is invisible, and can not be detected by animals or humans. The invisible illumination makes this a perfect camera for camera shy bucks, or for use in a security application on your farm. Other features include lightning fast 0.135 - 0.7 second adjustable trigger speeds, Full HD 1080p video clips and adjustable IR Illumination with Long Range, Fast Motion and Economy modes, to custom tailor your camera for open fields or wooded areas. The Dark Ops Full HD Extreme also features a battery meter that is compatible with Alkaline, Rechargeable and Lithium batteries.

Model# BTC-6FHDX



### Camera Features

- 24 MP
- 90 ft. Flash Range
- 0.135 - 0.7 Second Adjustable Trigger Speed
- 4 High Power Infrared LEDs for Night Illumination
- 1080p Full HD Videos with Sound (5 sec. - 2 min. length)
- HDR Night Images
- Invisible Infrared LED Illumination at Night
- 80 ft. Detection Range (user adjustable)
- 0.5 Second Recovery Time
- New "RADIANT 4" Night IR Illumination
- Selectable Night IR Illumination (Long Range, Fast Motion, Economy modes)
- Illuma-Smart Technology Automatically adjusts IR Flash for Perfect Night Photos
- SD Card Management
- Long battery life from 6 AA batteries (not included)
- Up to 8 Multi Shot Images
- Up to 8 Rapid Fire Images
- Smart IR Video
- Selectable Start / Stop Image Timer
- Programmable Picture Delay (1 sec. - 60 min.)
- Picture info bar displays: Time, Date, Temperature, Moon Phase, Camera ID, Barometric Pressure
- 12 volt External Power Jack
- Supports up to 512GB SDXC Memory Card (not included)
- 1/4" -20 Tripod Socket
- Battery Meter Functions with Alkaline, Rechargeable or Lithium Batteries
- Compact case size 4.25" x 3." x 2.5
- Timelapse Plus camera mode with IR triggered images



## DARK OPS PRO X 1080

Model# BTC-6PX-1080



### Camera Features

- 24 MP
- 1.5 Inch Color View Screen
- 90 ft. Infrared Illumination at Night
- Adjustable IR Flash (Power Save, Fast Motion, Long Range)
- 0.15 Second Trigger Speed
- Full HD 1080p Videos with Sound (5 sec.- 2 min. length)
- 90 ft. Image Detection Range
- 0.35 Second Recovery Time Between Images
- Illuma-Smart Technology Automatically adjusts IR Flash for Perfect Night Photos
- SD Card Management Options
- Smart IR Video
- Up to 1 Year Battery Life from 6 AA batteries (not included)
- Up to 8 Multi Shot Images
- Up to 8 Rapid Fire Images
- Selectable Start/ Stop Image Timer
- Programmable Picture Delay (1 sec. - 60 min.)
- Picture info bar displays: Time, Date, Temperature, Moon Phase, Camera ID, Barometric Pressure
- 12 volt External Power Jack
- All-Steel Adjustable Tree Mount Bracket
- Supports up to 512GB SDXC Memory Card (not included)
- ¼" -20 Tripod Socket



The 2023 Dark Ops HD Pro X 1080 takes footage of wildlife on your property using a **powerful Invisible Infrared flash** that is completely undetectable. This camera is perfect for animals that are easily spooked, or trespassers on your property. Features for this camera include: **1.5" color screen**, all-steel adjustable tree mount bracket, 0.15 second trigger speeds and adjustable IR flash power at night. The Dark Ops Pro X 1080 also shoots Full HD 1080p video with sound and is compatible with SD cards up to 512GB.

"We're lucky enough to be able to hunt in a bunch of great places across America, but when we get there, we need information to be successful. And our Browning Trail Cameras are great! They have great battery life, they don't miss pictures and videos, and the quality is so good you don't have to wonder what you're looking at!"

**GREG ZIPADELLI**

Browning Trail Cameras Brand Ambassador and Host at "Drop Zone TV" (Outdoor Channel)



“There are so many good reasons to choose Browning Trail Cameras, but one of the things that stands out to me is how easy they are to set-up. The menus are pretty simple to navigate and allow me to get my cameras set-up and in the field as fast as possible. Browning Trail Cameras are the Best There Is.”

**JEREMY MILLS**

Browning Trail Cameras Brand Ambassador and Team Hunter at “The Break” (Waypoint TV)

**DARK OPS PRO DCL**



The Dark Ops Pro DCL has the most robust feature set in our Dark Ops camera series. These cameras feature an Infrared Illumination System to increase picture quality and range at night like never before. The Invisible IR Illumination ensures game or trespassers on your property do not detect the camera while it is capturing images or videos. The Dark Ops Pro DCL features **“Dual Camera Lens Technology”**. This feature incorporates a custom tuned daytime camera lens to produce razor sharp daytime images, while the dedicated night camera lens takes incredibly clear nighttime photos. This camera packs all the performance you would expect with 26 MP picture quality, 1080p Full HD video with sound, lightning fast 0.15 second trigger speeds, and superior battery life. Additional features include SD Card Management options and Smart IR video to keep recording game during the daytime. The Dark Ops Pro DCL is compatible with up to 512GB SD cards.

**Model# BTC-6DCL**



**Camera Features**

- 26 MP
- Dual Camera Lens Technology
- 1.5" color view screen
- Invisible Night IR Illumination
- 100 ft. flash range
- Wide View 54 degree Viewing Angle
- Adjustable flash range (fast motion, power save, long range)
- 1920x1080 Full HD videos with sound (5 sec.- 2 min. length)
- 0.15 Second trigger speed
- 0.35 Second picture recovery time
- Illuma-Smart Technology Automatically adjusts IR Flash for Perfect Night Photos
- All-Steel adjustable tree mounting bracket
- SD Card Management
- Long battery life from 6 AA batteries (not included)
- Up to 8 multi Shot images
- Up to 8 Rapid Fire images
- Smart IR video
- Programmable Picture Delay (1 sec. – 60 min.)
- Picture info bar displays: time, date, temperature, moon phase, barometric pressure, camera ID
- 12 volt external power jack
- Support up to 512GB SDXC memory card (not included)
- ¼" -20 tripod socket
- Compact case size 4.25" x 3.5" x 2.5"
- Timelapse Plus camera mode with IR triggered images
- Compatible with Buck Watch Timelapse viewer software



**NEW**  
**RADIANT 5**  
 NIGHT ILLUMINATION TECHNOLOGY

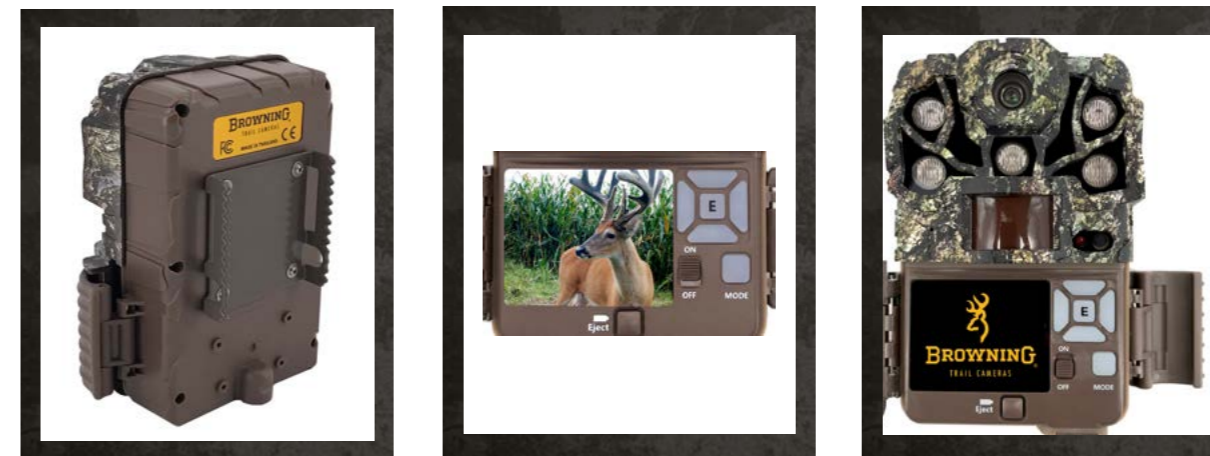
**5 HIGH POWER LEDs**

*"Browning Trail Cameras are honestly the best trail cameras we have ever used and without question they have become our number one scouting tool to get in the right place at the right time!"*

**JON BRUNSON**

Browning Trail Camera Ambassador and Host at "Addicted to the Outdoors" (Outdoor Channel)

RECON FORCE ELITE HP5



The Recon Force Elite HP5 camera features new "Radiant 5" night illumination technology to give you the highest quality HDR night pictures available in any conditions. Also included is the adjustable detection range from 55ft. - 100 ft. and 3 adjustable IR flash modes for optimum picture control at night. Another great feature is the built in 2" color display to preview images and videos right in the field. The Recon Force Elite HP5 also features the highest quality 24 MP pictures and 1920 x 1080 Full HD video quality in either 30 or 60 frames per second for the most incredible video clips of game on your property. Additional features include Smart IR Video, which continues to record video footage while game is moving in front of the camera and SD Card Management Options which allow you to overwrite older images on the SD Card if the memory is full. The Recon Force Elite HP5 is also compatible with up to 512 GB SDXC memory cards.

Model# BTC-7E-HP5

Camera Features

- 24 MP
- 2" Color Viewing Screen
- 130 ft. Infrared Flash Range at Night
- Adjustable IR Flash (Power Save, Long Range, Fast Motion)
- 0.1 - 0.7 Second Adjustable Trigger Speed
- 1920 x 1080p FHD Videos with Sound (5 sec.- 2 min. length)
- Videos can be taken at 30 or 60 frames per second
- Adjustable IR Detection Range up to 100 ft.
- 0.5 Second Recovery Time between Images
- Illuma-Smart Technology Automatically adjusts IR Flash for Perfect Night Photos
- SD Card Management Options
- Smart IR Video
- Selectable Start / Stop Image Timer
- Long Battery Life from 8 AA batteries (not included)
- Battery Meter Functions with Alkaline, Rechargeable and Lithium Batteries
- Up to 8 Multi Shot Images
- Up to 8 Rapid Fire Images
- Programmable Picture Delay (1 sec. - 60 min.)
- Picture info bar displays: Time, Date, Temperature, Moon Phase, Camera ID
- Multilingual Programming Menu
- 12 volt External Power Jack
- Supports up to 512GB SDXC Memory Card (not included)
- ¼" -20 Tripod Socket
- Compact Case Size 5" x 3.5" x 2"
- Metal Tree Mount Bracket
- Timelapse Plus Camera Mode, with Infrared Triggered Pictures
- Compatible with Buck Watch Timelapse viewer software

“When I set up my trail cameras, I am a video guy! You learn so much about the animals by the way they are behaving and my Browning Trail Cameras deliver the best video and audio quality in the market. THAT’s why I choose Browning Trail Cameras!”

**HAL SHAFFER**

Browning Trail Cameras Brand Ambassador and Host at “Drop Zone” (Outdoor Channel)



**SPEC OPS ELITE HP5**

The New Spec Ops Elite HP5 features the highest quality 24 MP image resolution on the market today. The invisible, adjustable power “Night Vision” IR illumination reaches out to 100 ft., thanks to the new RADIANT 5 Night Illumination Technology. The new Spec Ops Elite HP5 camera also features an incredible 1920 x 1080 Full HD video processor, capable of producing stunning video footage of your game that can be easily viewed on a computer or big screen TV. Additional features include a 2” color view screen and Smart IR Video, which continues to record video footage while game is moving in front of the camera. SD Card Management options allow you to overwrite older images on the SD card if the memory is full. This camera is perfect for surveillance of game animals that are easily spooked, as well as a great security camera around your home or hunting property.



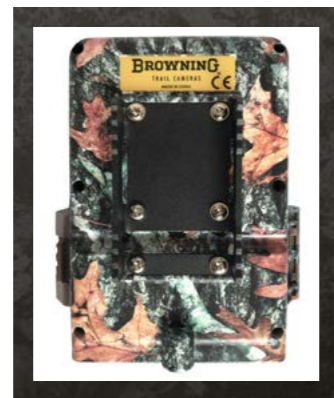
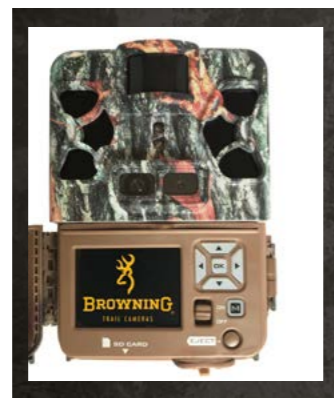
**Model# BTC-8E-HP5**

**Camera Features**

- 24 MP
- 2” Color Viewing Screen
- Invisible “Night Vision” Infrared LED Illumination at Night
- Adjustable IR Flash (Power Save, Fast Motion, Long Range)
- 100 Ft. IR Flash Range
- New “RADIANT 5” Night Illumination Technology
- HDR Night Images (High Dynamic Range)
- 1920 x 1080 FHD Videos with Sound (5 sec. - 2 min. length)
- Adjustable 0.1 - 0.7 Second Trigger Speed
- 0.5 Second Recovery Time
- Adjustable Detection Range up to 80ft.
- Illuma-Smart Technology Automatically adjusts IR Flash for Perfect Night Photos
- SD Card Management Options
- Smart IR Video
- H.264 Video Format
- Selectable Start / Stop Image Timer
- Long Battery Life from 8 AA Batteries (not included)
- Battery Meter Compatible with Alkaline, Rechargeable and Lithium Batteries
- Up to 8 Multi Shot Images
- Up to 8 Rapid Fire Images
- Programmable Picture Delay (1 sec. – 60 min.)
- Picture info bar displays: Time, Date, Temperature, Moon Phase, Barometric Pressure, Camera ID
- Multilingual Programming Menu
- 12 volt External Power Jack
- Support up to 512GB SDXC Memory Card (not included)
- ¼” -20 Tripod Socket
- Compact Case Size 5” x 3.5” x 2”
- Metal Tree Mount Bracket
- Timelapse Plus Camera Mode, with Infrared Triggered Pictures

## PATRIOT

The Patriot, our top of the line dual lens trail camera, features military grade invisible infrared illumination technologies. The **Patriot trail camera has 2 built in camera sensors and lens arrays.** The sensor and lens combination for daytime photography is finely tuned to deliver clear, razor sharp images and videos in the field during the daytime. The military grade night vision sensor and lens system deliver night-time photos and videos using invisible Infrared illumination. The Patriot also features a **2 inch color view screen**, adjustable night illumination options and shoots 1080p Full HD videos at up to 60 frames per second. If you are looking for our most feature rich trail camera that operates completely undetectable in the woods, day or night, look no further than the Browning Patriot series camera.



## Model# BTC-PATRIOT-FHD



### Camera Features

- 24 MP
- Dual Camera Lens Technology
- 2" Color View Screen
- Invisible Night IR Illumination
- 110 ft. Illumination Range at Night
- 90 ft. IR Detection Range
- Adjustable Flash Range (power save, long range)
- 1920x1080 Full HD Videos with Sound @ 60 fps (5 sec.- 2 min. length)
- 0.15 Second Trigger Speed
- 0.35 Second Picture Recovery Time
- Illuma-Smart Technology Automatically adjusts IR Flash for Perfect Night Photos
- All-Steel Tree Mounting Bracket
- SD Card Management
- Long battery life from 8 AA batteries (not included)
- Up to 8 multi Shot images Up to 8 Rapid Fire images
- Smart IR video
- Selectable Start / Stop Image Timer
- Programmable picture delay (1 sec. – 60 min.)
- Picture info bar displays: time, date, temperature, moon phase, barometric pressure, camera ID
- Multilingual Programming Menu
- 12 volt external power jack
- Support up to 512GB SDXC memory card (not included)
- ¼" -20 tripod socket
- Compact case size 5" x 3.75" x 2.5"
- Timelapse Plus camera mode with IR triggered images
- Compatible with Browning Buck Watch Timelapse viewer software

## COMMAND OPS ELITE 22

The Command Ops Elite series of cameras has been updated to deliver big performance in a small package. The crisp **22MP picture resolution** ensures the very best quality pictures of your game, day or night. With fast 0.3 second trigger speeds, you are sure to capture anything that steps out in front of your camera. The Command Ops Elite series also features 900p HD+ video with sound, to capture the best video of game on your property.



## Model# BTC-4E22



### Camera Features

- 22 MP
- 80 ft. Infrared Flash Range
- 0.3 Second Trigger Speed
- Infrared LED Illumination at night
- 900p HD+ Videos with Sound (5 sec. - 2 min. length)
- 70 ft. Detection Range
- Illuma-Smart Technology Automatically adjusts IR Flash for Perfect Night Photos
- SD Card Management Feature
- Long Battery Life from 6 AA Batteries (not included)
- Up to 8 Multi Shot Images
- Up to 4 Rapid Fire Images
- Programmable Picture Delay (1 sec. – 60 min.)
- Picture info bar displays: Time, Date, Temperature, Moon Phase, Camera ID
- 12 volt External Power Jack
- Supports up to 32GB SD Card (not included)
- ¼" -20 Tripod Socket
- Compact Case Size 4.5" x 3.5" x 2.5"
- Timelapse Plus Camera Mode
- Compatible with Browning Buck Watch Timelapse Viewer Software



### ECONOMY CAMERA MOUNT



### Model# BTC-ECM

Now there is an affordable way to quickly and easily install your Browning Trail Cameras in the field. The Economy Camera Mount easily screws into any tree giving you a perfect mounting platform. Each package contains 3 All-Steel, powder coated screw mounts.



### CAMERA T-POST MOUNT

The all new T-Post Camera Mount is the ideal way to mount your trail cameras along the edge of fenced fields. The T-Post camera mount will mount to either side of nearly every T-Post on your farm or hunting property. The adjustable gimbal mount is ideal for aiming your trail camera at the perfect angle in the field. T-Post Mounts are constructed of powder coated steel for maximum life in the field.

### Model# BTC-CTM



### CAMERA FIELD MOUNT

The new Camera Field Mount is the perfect solution for mounting your trail camera in fields or areas where there are no trees. The rugged powder coated All-Steel field mount easily stakes into any terrain. The field mount can easily mount up to 2 cameras in the field, and features easy to use gimbal mounts to mount your cameras at the perfect angle.

### Model# BTC-CFM

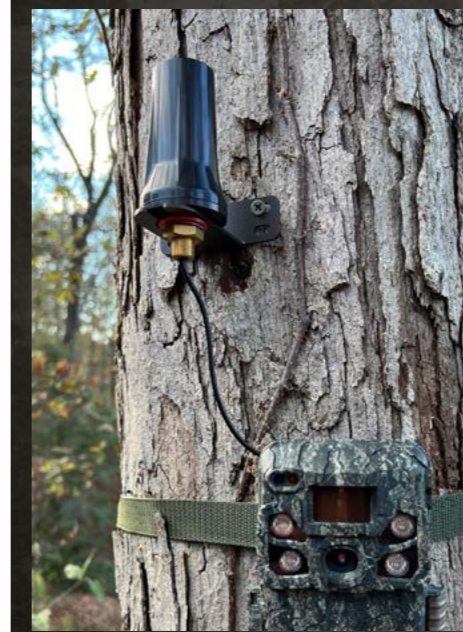
### CAMERA TREE MOUNT



### Model# BTC-TM

The Camera Tree Mount is the perfect accessory to aid in the placement of your trail cameras. You can now mount your trail cameras to that crooked tree and position the camera perfectly using the built in gimbal mount. The all steel construction ensures there are no plastic pieces to break in the field. The tree mount attaches via a 1/4"-20 threaded insert located in the bottom of most Browning Trail Cameras.

### LONG RANGE CELL ANTENNA



The new Long Range cellular antenna from Browning Trail Cameras will greatly extend the cellular reception of your camera in remote hunting areas. Now that great hunting spot with limited or no cellular reception can be monitored reliably with a boosted signal. The antenna includes 10 ft of cable and can be mounted above obstructions to get the best cell signal possible in remote areas. The long range antenna accessory is compatible with Browning Vision Pro series cellular trail cameras. Mounting hardware included.

### Model # BTC-LRA

### SD CARDS



For maximum trail camera performance, we recommend using Browning brand SD cards in your trail cameras. All of our SD cards are SDHC class 10, ensuring the fastest write speeds for high resolution photos and HD video clips. Our cards are available in 32GB and 64GB capacities.

**32GB Model # BTC-32GSD**  
**64GB Model # BTC-64GSD**

## CAMERA SECURITY BOXES



### Cellular Security Box Model# BTC-SB-SM2

The New Cellular Security Box has been custom engineered to allow the greatest cellular reception and transmission of any camera security box on the market today. Specially designed cut outs allow for cellular and GPS signals to interact with the built in or external high gain antennas in Browning cellular cameras.

Fits Models:

BTC-PSM / PSMX, BTC-4G-V, BTC-VP, BTC-RLDCP, BTC-DWPS Series Cell cameras.



### Model# BTC-SB

*Spec Ops, Recon Force, Command Ops HD and Patriot Series Cameras*

### Model# BTC-SB-SM

*Strike Force, Dark Ops and Command Ops Pro Cameras*

Our camera security boxes have been designed to ensure your trail camera stays where you put it. The all steel construction ensures maximum protection in the field. The added feature of the camouflage exterior makes your camera nearly impossible to detect in the woods. We offer 3 sizes of security boxes to fit specific cameras in our lineup. The security box can be locked using a standard padlock or a Master Lock Python cable (not included).

## BATTERIES



### Model# BTC-8AA

Our trail camera batteries have been designed to meet the rigorous demands of today's trail cameras. We know that trail cameras are expected to perform across a wide spectrum of temperature extremes and other environmental stresses. Browning batteries are up to the challenge. Our Alkaline batteries are packed 8 AA per pack and are mercury and cadmium free.

## SOLAR CAMERA POWER PACK



### Model# BTC-SBP12

The New Solar Camera Power Pack is compatible with all of our trail camera models, and provides a constant power source for your camera in the field. The Power Pack includes 6 AA NiMH rechargeable batteries that are constantly being recharged by the highly efficient solar cell to keep your cameras running strong in the field. The solar pack mounts easily to any tree, or can be used with our line of camera mounts. The solar panel can be easily adjusted to the perfect angle to maximize solar power output.

## POWER PACK



### Model# BTC-XB

Our Trail Camera Power Pack will extend the battery life of your Browning Trail Camera in the field. This micro sized battery pack holds 8 AA batteries in the same easy to use battery tray used in the trail cameras. Other features include a built in battery tester and a twist lock plug to lock the power adapter to your Browning Trail Camera. Not compatible with Defender 850 or Defender 950 cameras. (batteries not included)



**BROWNING**

**TRAIL CAMERAS**

Manufactured and Distributed by Prometheus Group, LLC Birmingham, Alabama

Tel: +1 888 618 4496 Email: [info@browningtrailcams.com](mailto:info@browningtrailcams.com)

Fax: +1 888 628 9877 Web: [browningtrailcameras.com](http://browningtrailcameras.com)

Browning Trademarks Licensed from Browning

**BROWNING**  
OFFICIAL LICENSED PRODUCT